

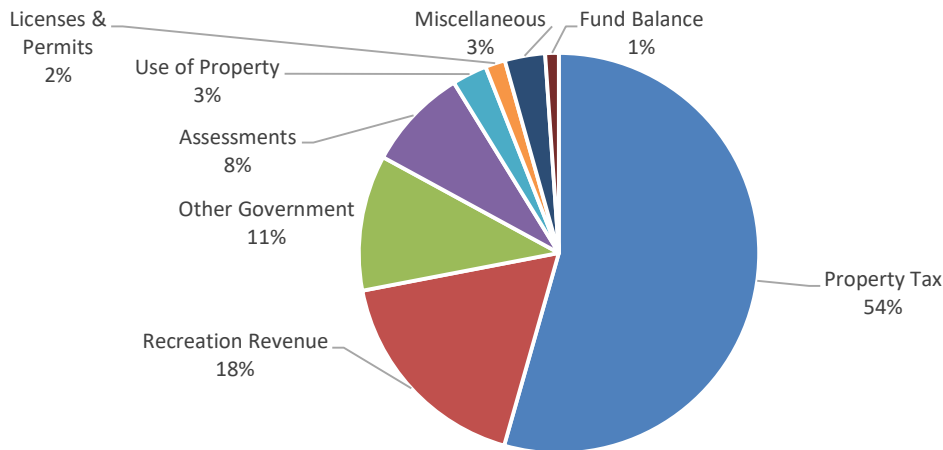
PRELIMINARY BUDGET

FY 2026-2027

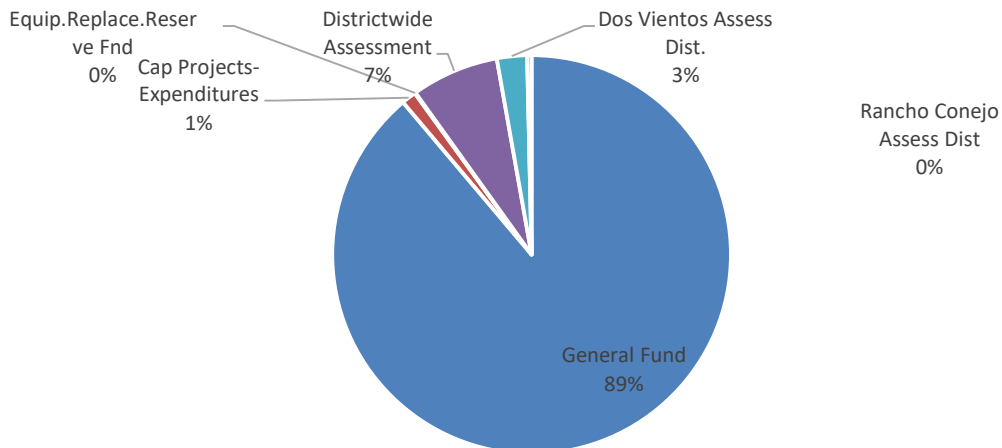
ADMINISTRATIVE OFFICES

403 W. Hillcrest Drive, Thousand Oaks, CA 91360
805-495-6471 • Fax: 805-497-3199 • parks@crpd.org • www.crpd.org

ALL DISTRICT REVENUE: \$39,877,960

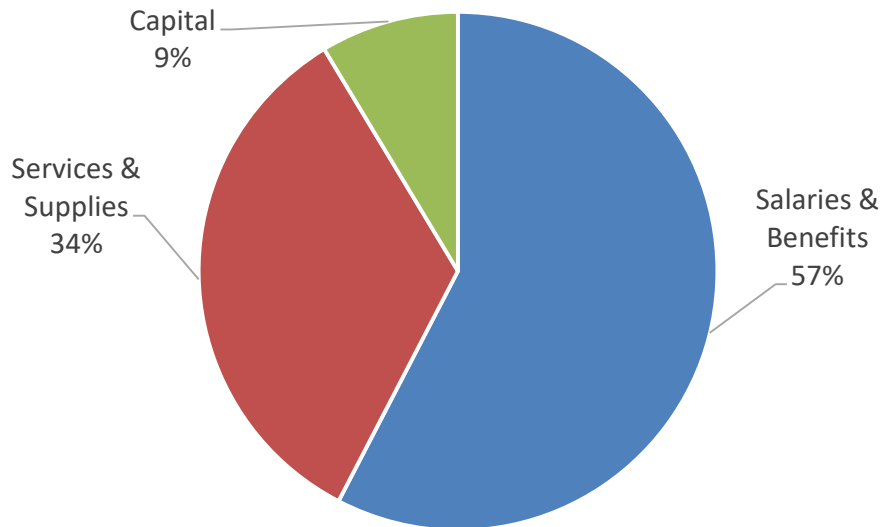


Type of Revenue	2026-27 Preliminary Budget
Property Tax	\$ 21,693,000
Recreation Revenue	\$ 7,016,742
Other Government	\$ 4,364,000
Assessments	\$ 3,301,600
Use of Property	\$ 1,124,800
Licenses & Permits	\$ 638,300
Miscellaneous	\$ 1,300,000
Fund Balance	\$ 439,518
TOTAL REVENUES	\$ 39,877,960

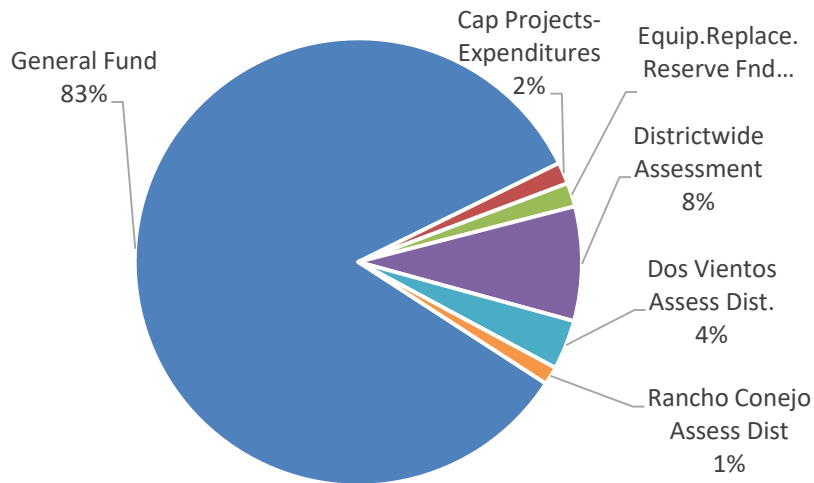


Revenue by Fund	2026-27 Preliminary Budget
General Fund	\$ 35,425,342
Cap Projects-Expenditures	\$ 475,000
Equip. Replace. Reserve Fnd	\$ 30,000
Districtwide Assessment	\$ 2,834,318
Dos Vientos Assess Dist.	\$ 966,200
Rancho Conejo Assess Dist	\$ 147,100
TOTAL REVENUES	\$ 39,877,960

ALL DISTRICT EXPENSES: \$39,877,960



Type of Expense	2026-27 Preliminary Budget
Salaries & Benefits	\$ 22,980,566
Services & Supplies	\$ 13,454,438
Capital	\$ 3,442,956
TOTAL EXPENSES	\$ 39,877,960



Expenses by Fund	2026-27 Preliminary Budget
General Fund	\$ 33,317,984
Cap Projects-Expenditures	\$ 625,000
Equip.Replace.Reserve Fnd	\$ 680,000
Districtwide Assessment	\$ 3,305,874
Dos Vientos Assess Dist.	\$ 1,427,712
Rancho Conejo Assess Dist	\$ 521,390
TOTAL EXPENSES	\$ 39,877,960

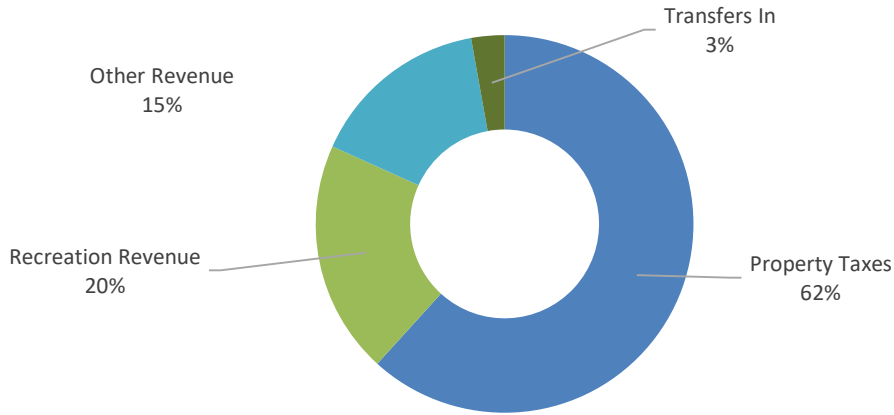
GENERAL FUND



Conejo Recreation and Park District

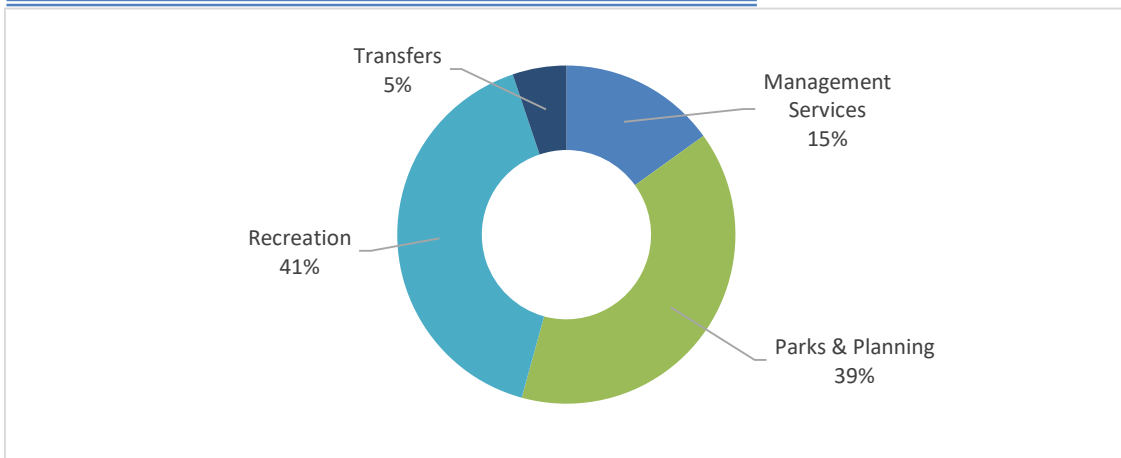
General Fund Budget Summary

REVENUES



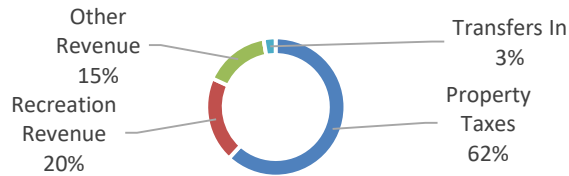
REVENUE	2026-27 Preliminary Budget
Property Taxes	\$ 21,693,000
Recreation Revenue	\$ 7,016,742
Other Revenue	\$ 5,415,600
Miscellaneous Revenue	\$ -
Transfers In	\$ 1,000,000
Use of Fund Balance	\$ -
Total Revenue	\$ 35,125,342

EXPENDITURES



EXPENDITURES	2026-27 Preliminary Budget
Management Services	\$ 5,289,407
Parks & Planning	\$ 13,763,418
Recreation	\$ 14,263,103
Transfers	\$ 1,807,358
Reserves	\$ 2,056
Total Expenditures	\$ 35,125,342

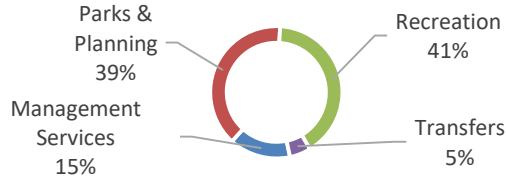
GENERAL FUND
REVENUES
\$35,125,342



Property Taxes		2026-27 Preliminary Budget
Property Tax - Current Secured	\$	20,650,000
Property Tax - Current Unsecured	\$	548,000
Homeowners Property Tax Relief	\$	100,000
Supplemental Property Tax	\$	395,000
Subtotal - Property Taxes	\$	21,693,000
Other Revenue		2026-27 Preliminary Budget
Licenses & Permits	\$	7,800
Interest Earnings	\$	100,000
Rents and Concessions	\$	943,800
RPTTF (RDA) Allocation	\$	2,994,000
COSCA	\$	820,000
MRCA	\$	550,000
Subtotal - Other Revenue	\$	5,415,600
Recreation Revenue		2026-27 Preliminary Budget
Youth Outreach	\$	100,000
Teen Center	\$	860,842
Therapeutic Program	\$	220,000
GACC Activities/Program	\$	327,100
CSVP - Program	\$	55,000
CSVP - Nutrition Grant	\$	132,500
CSVP - Breakfast Program	\$	18,000
Cultural Activities	\$	307,700
Theater Activities	\$	270,300
Elementary Music	\$	348,300
Special Activities	\$	71,000
Summer Day Camp	\$	543,000
White Oak	\$	73,800
Borchard Center Activities	\$	706,000
Racquetball/Handball	\$	9,700
Conejo Center Activities	\$	540,300
Outdoor Activities	\$	26,500
McCrea Ranch Activities	\$	21,700
Tennis	\$	214,000
Sports Leagues & Tournaments	\$	122,400
Sports Classes & Instruction	\$	288,500
Thousand Oaks Center Activities	\$	431,500
Dos Vientos Center Activities	\$	462,900
Community Pool at CLU	\$	684,400
Newbury Park Pool	\$	103,200
Thousand Oaks Pool	\$	75,100
Other Recreation Charges	\$	3,000
Subtotal - Recreation Revenue	\$	7,016,742
Transfers In		2026-27 Preliminary Budget
Subtotal - Transfers In	\$	1,000,000
Total - ALL REVENUE	\$	35,125,342

GENERAL FUND EXPENDITURES

\$35,125,342



Management Services		2026-27 Preliminary Budget
Administration	\$	980,592
Finance	\$	802,619
Information Technology	\$	829,709
Human Resources	\$	861,023
Risk Management	\$	850,546
MRCA	\$	712,979
Hillcrest Center	\$	251,939
Subtotal - Management Services	\$	5,289,407
Parks and Planning		2026-27 Preliminary Budget
Administration	\$	508,181
Planning & Development	\$	287,661
Grounds Maintenance	\$	7,938,208
Building Maintenance	\$	2,278,006
Fleet Maintenance	\$	597,832
COSCA	\$	2,153,530
Subtotal - Parks and Planning	\$	13,763,418
Recreation		2026-27 Preliminary Budget
Administration	\$	640,168
Community Engagement	\$	761,414
Sycamore Team Management	\$	403,460
Borchard Center Activities	\$	1,281,890
Conejo Center Activities	\$	853,337
Thousand Oaks Center Activities	\$	901,125
Dos Vientos Activities	\$	1,003,656
Oak Team Management	\$	329,124
Cultural Activities	\$	1,606,579
Sports	\$	1,149,091
Aquatics	\$	1,203,432
Outdoor Activities	\$	736,914
Goebel Adult Community Center	\$	1,006,735
Conejo Senior Volunteer Program	\$	483,454
Teen Center Activities	\$	850,174
Youth Outreach	\$	304,765
Therapeutic Program	\$	632,013
Inclusion	\$	115,772
Subtotal - Recreation	\$	14,263,103
Transfers & Reserves		2026-27 Preliminary Budget
Subtotal - Transfers & Reserves	\$	1,809,414
Total - ALL EXPENDITURES	\$	35,125,342.00

Full Time Employees:

98.40

MANAGEMENT SERVICES

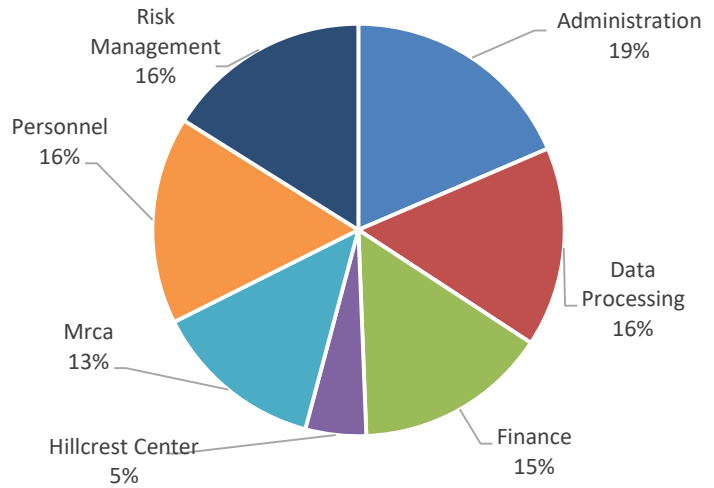
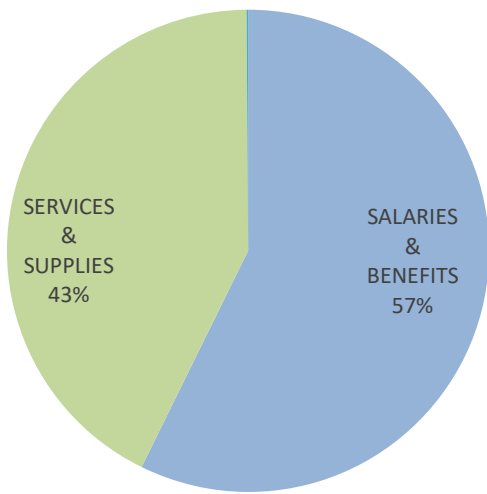


DIVISION BUDGET SUMMARY

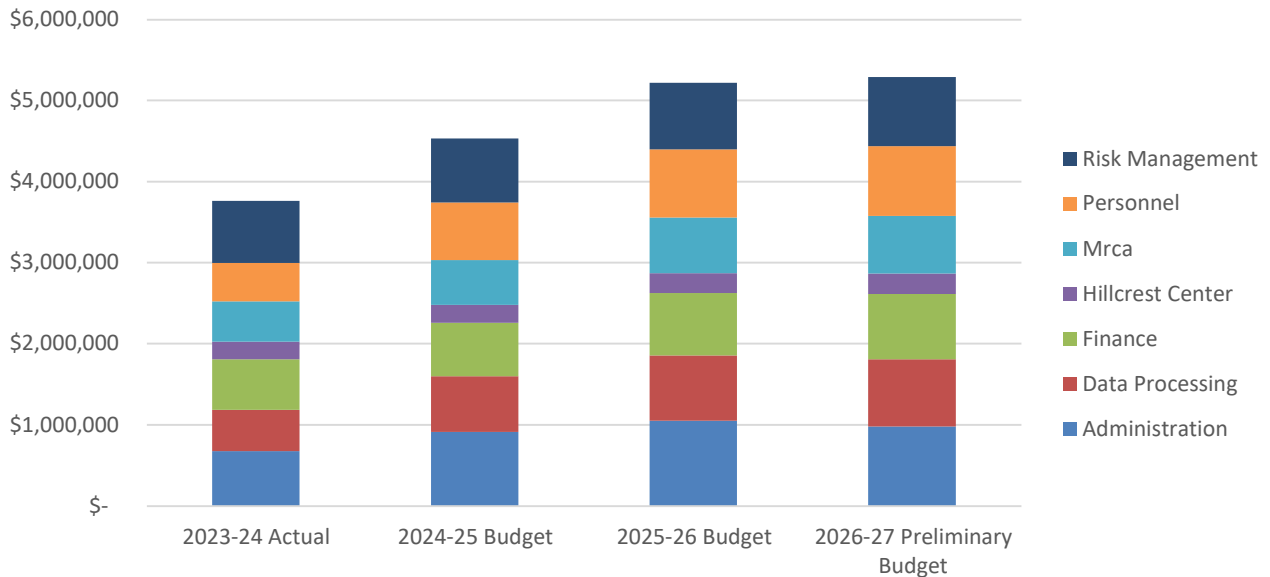
DIVISION: Management Services

EXPENDITURE CATEGORY	2026-27 Preliminary Budget
SALARIES & BENEFITS	\$ 3,029,739
SERVICES & SUPPLIES	\$ 2,254,668
CAPITAL OUTLAY	\$ 5,000
TOTAL BUDGET	\$ 5,289,407

Full Time Employees 13.60

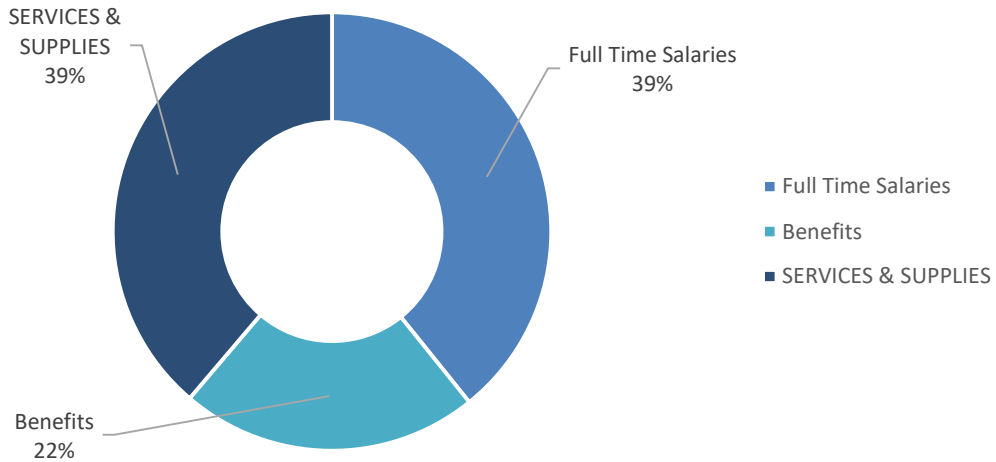


WORK CENTERS



WORK CENTER BUDGET SUMMARY

DIVISION: Management Services
WORK CENTER: Administration



EXPENDITURE CATEGORY	2026-27 Preliminary Budget
SALARIES & BENEFITS	\$ 600,692
<i>Full Time Salaries</i>	\$ 384,455
<i>Part Time Salaries</i>	
<i>Benefits</i>	\$ 216,237
SERVICES & SUPPLIES	\$ 379,900
CAPITAL OUTLAY	
TOTAL BUDGET	\$ 980,592

Full Time Employees

1.95

Work Center Description

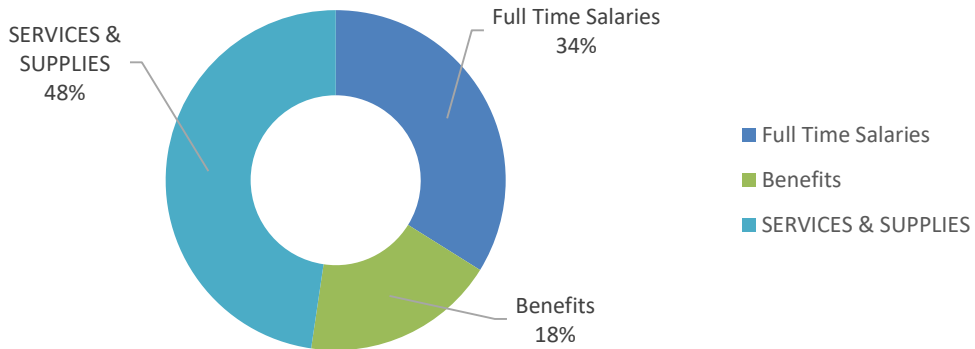
This work center provides for District administration, including the costs associated with the Board of Directors and General Manager's office.

Work Center Community Benefit

This work center provides leadership, oversight, and strategic direction to ensure the District operates effectively and in the public's best interest. It supports transparent governance and informed decision-making that directly benefits the community.

WORK CENTER BUDGET SUMMARY

DIVISION: Management Services
WORK CENTER: Finance



EXPENDITURE CATEGORY	2026-27 Preliminary Budget
SALARIES & BENEFITS	\$ 419,645
<i>Full Time Salaries</i>	\$ 271,525
<i>Part Time Salaries</i>	
<i>Benefits</i>	\$ 148,120
SERVICES & SUPPLIES	\$ 382,850
CAPITAL OUTLAY	
TOTAL BUDGET	\$ 802,495

Full Time Employees

2.50

Work Center Description

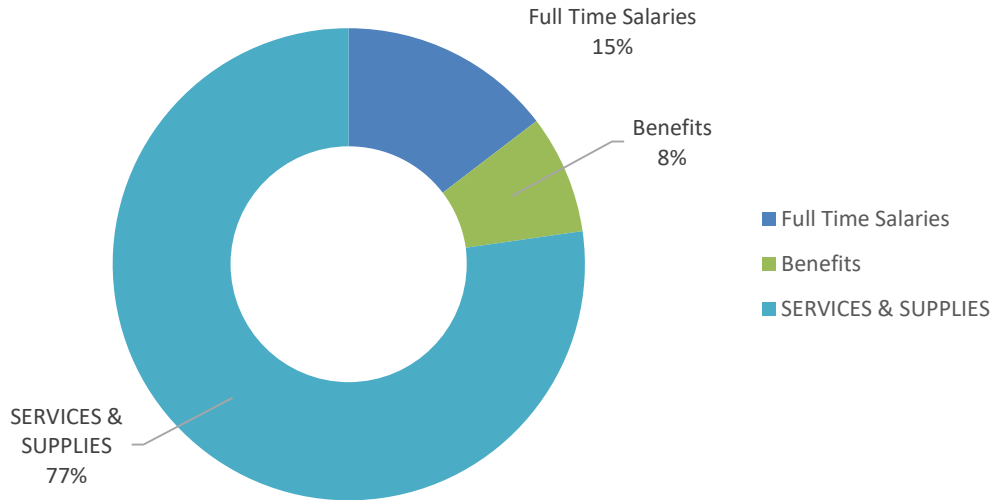
This work center provides budget, accounting, cash management, payroll, financial reporting, audit and other financial oversight activities.

Work Center Community Benefit

Our finance department serves the community with fiscal responsibility, ethical practices, and transparency. We efficiently manage resources, ensure regulatory compliance, and build trust through clear and open financial practices.

WORK CENTER BUDGET SUMMARY

DIVISION: Management Services
WORK CENTER: Hillcrest Center



EXPENDITURE CATEGORY	2026-27 Preliminary Budget
SALARIES & BENEFITS	\$ 57,339
<i>Full Time Salaries</i>	\$ 36,843
<i>Part Time Salaries</i>	\$ -
<i>Benefits</i>	\$ 20,496
SERVICES & SUPPLIES	\$ 194,600
CAPITAL OUTLAY	
TOTAL BUDGET	\$ 251,939

Full Time Employees

0.45

Work Center Description

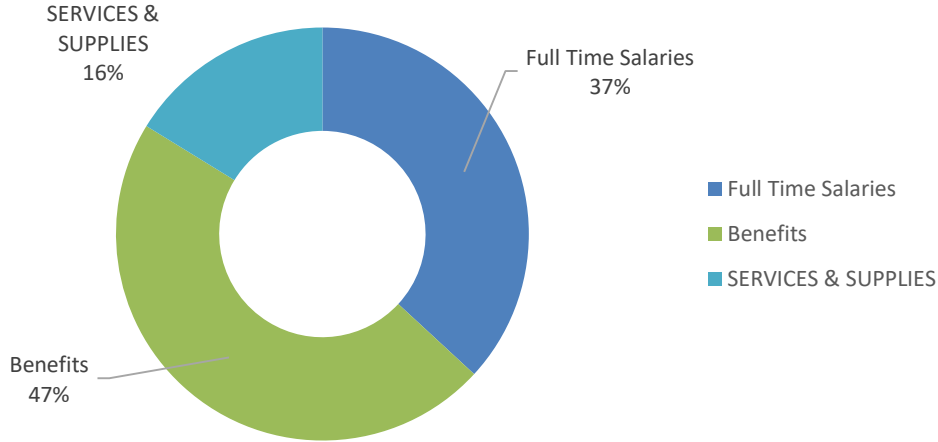
This work center provides for operation of Hillcrest Center as the District's administrative headquarters, including building maintenance and utilities. Costs associated with events at Hillcrest Center appear in the Recreation and Community Services Division, Cultural Activities Work Center.

Work Center Community Benefit

This work unit ensures the effective operation and maintenance of Hillcrest Center, the District's administrative hub, supporting staff, public meetings, and community engagement. A well-maintained facility enhances access to services and provides a welcoming space for public interaction with the District.

WORK CENTER BUDGET SUMMARY

DIVISION: Management Services
WORK CENTER: Human Resources



EXPENDITURE CATEGORY	2026-27 Preliminary Budget
SALARIES & BENEFITS	\$ 721,180
<i>Full Time Salaries</i>	\$ 317,243
<i>Part Time Salaries</i>	\$ -
<i>Benefits</i>	\$ 403,937
SERVICES & SUPPLIES	\$ 139,702
CAPITAL OUTLAY	
TOTAL BUDGET	\$ 860,882

Full Time Employees

2.40

Work Center Description

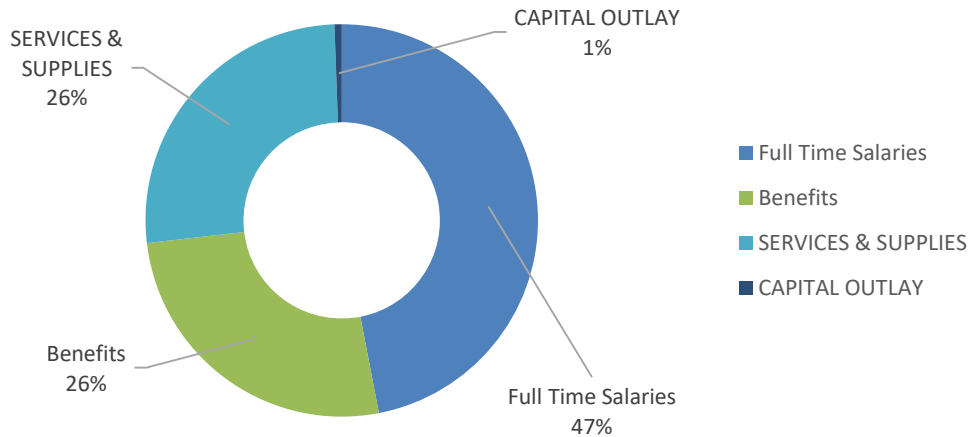
This work center provides for administration of Human Resources, including recruitment, retention, labor negotiations, benefits administration, etc. This budgets includes funds for the District's retiree stipend (pension) and retiree medical costs (OPEB). Amounts not used will be transferred to the Pension Rate Stabilization Reserve Fund, reflecting the benefit of having put District Reserve Funds in trust for

Work Center Community Benefit

This work unit supports a high-performing workforce by managing recruitment, benefits, and labor relations, ensuring the District can attract and retain qualified staff to serve the public. By responsibly funding retiree obligations and stabilizing future costs through reserves, it helps protect long-term financial health and service continuity for the community.

WORK CENTER BUDGET SUMMARY

DIVISION: Management Services
WORK CENTER: Information Technology



EXPENDITURE CATEGORY	2026-27 Preliminary Budget
SALARIES & BENEFITS	\$ 606,891
<i>Full Time Salaries</i>	\$ 389,721
<i>Part Time Salaries</i>	\$ -
<i>Benefits</i>	\$ 217,170
SERVICES & SUPPLIES	\$ 217,818
CAPITAL OUTLAY	\$ 5,000
TOTAL BUDGET	\$ 829,709

Full Time Employees

3.20

Work Center Description

This work center provides services related to technology operations including personal computers, servers, networking, connectivity, email, telephones, websites, training and support.

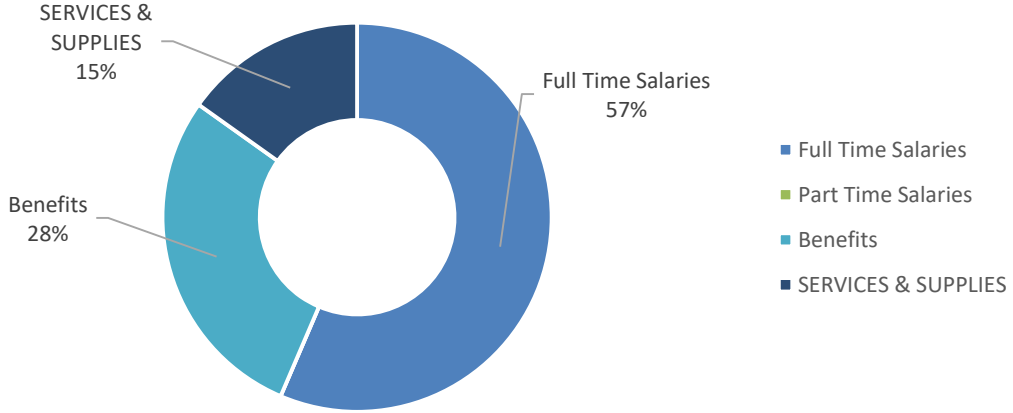
Work Center Community Benefit

This work center ensures reliable and secure technology systems that support the delivery of public services, enabling staff to operate efficiently and stay connected with the community. By maintaining digital infrastructure and providing technical support, it enhances public access to information, online services, and communication with the District.

Capital Outlay	2026-27	
Infrastructure Enhancements	\$	5,000

WORK CENTER BUDGET SUMMARY

DIVISION: Management Services
WORK CENTER: MRCA



EXPENDITURE CATEGORY	2026-27 Preliminary Budget
SALARIES & BENEFITS	\$ 604,794
<i>Full Time Salaries</i>	\$ 402,423
<i>Part Time Salaries</i>	\$ -
<i>Benefits</i>	\$ 202,371
SERVICES & SUPPLIES	\$ 108,185
CAPITAL OUTLAY	\$ -
TOTAL BUDGET	\$ 712,979

Full Time Employees

2.80

Work Center Description

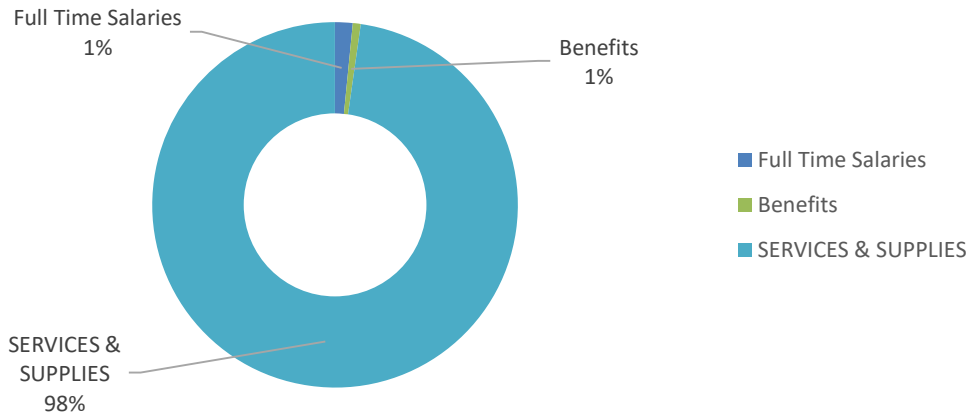
This work unit provides resources for the accounting and financial oversight CRPD provides to MRCA, which is a Joint Powers Authority comprised of CRPD, Santa Monica Mountains Conservancy, and Rancho Simi Recreation and Park District.

Work Center Community Benefit

This work unit supports regional collaboration by providing essential financial oversight and accounting services to the MRCA, ensuring transparency and accountability in managing shared public resources. Its efforts help sustain joint conservation and recreation initiatives that benefit a broader community.

WORK CENTER BUDGET SUMMARY

DIVISION: Management Services
WORK CENTER: Risk Management



EXPENDITURE CATEGORY	2026-27 Preliminary Budget
SALARIES & BENEFITS	\$ 19,198
<i>Full Time Salaries</i>	\$ 13,128
<i>Part Time Salaries</i>	\$ -
<i>Benefits</i>	\$ 6,070
SERVICES & SUPPLIES	\$ 831,336
CAPITAL OUTLAY	
TOTAL BUDGET	\$ 850,534

Full Time Employees

0.05

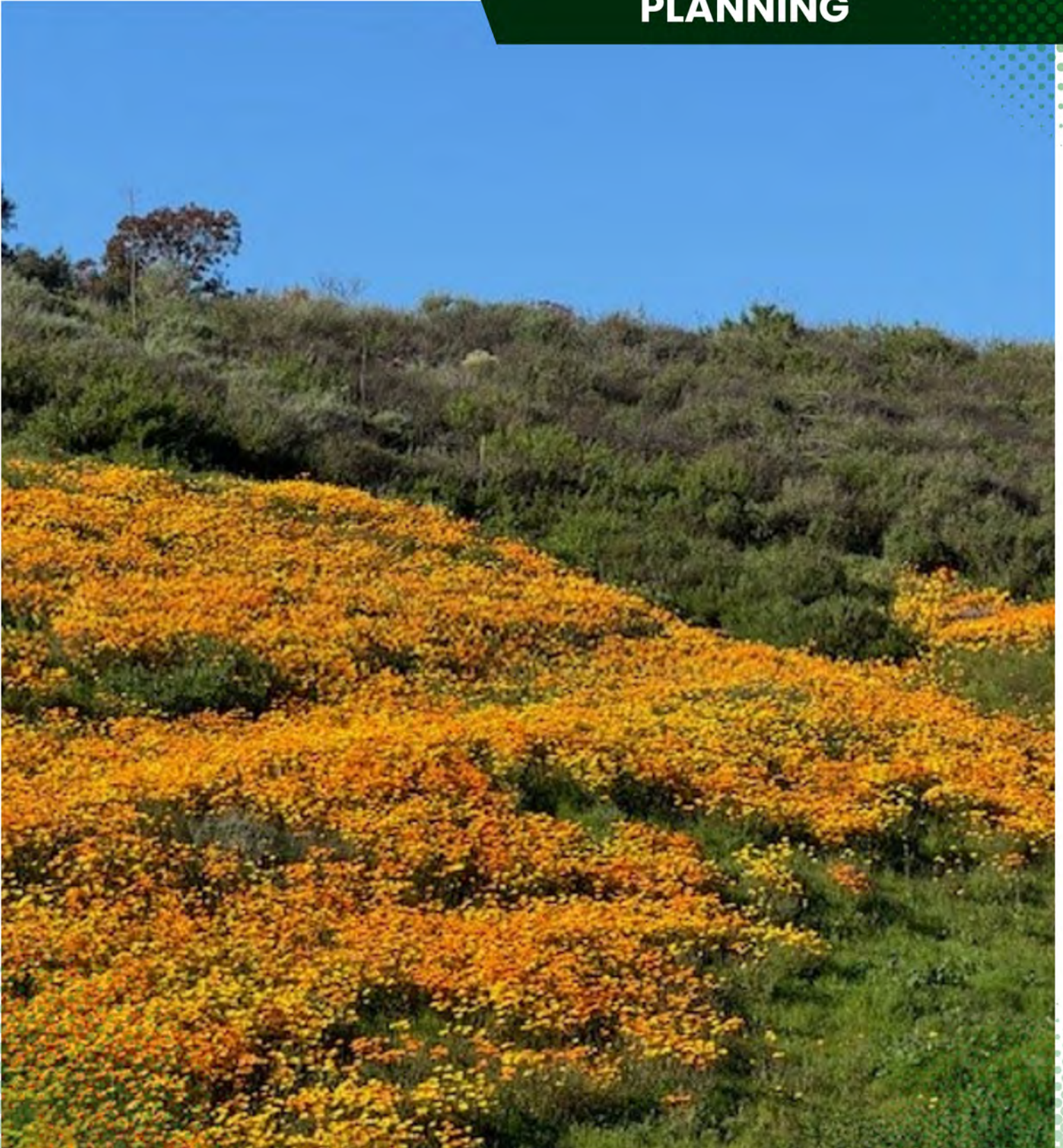
Work Center Description

This work unit provides resources for management and payment of workers' compensation claims and liability insurance policies and claims. The increased budget requests reflect increases in insurance costs and expenses to address constructive receipt tax issues for compensatory time year end payouts.

Work Center Community Benefit

This work unit safeguards the District's ability to serve the public by managing risk and ensuring coverage for workers' compensation and liability claims. By proactively addressing insurance and compliance costs, it helps maintain financial stability and protects both employees and community resources.

PARKS & PLANNING



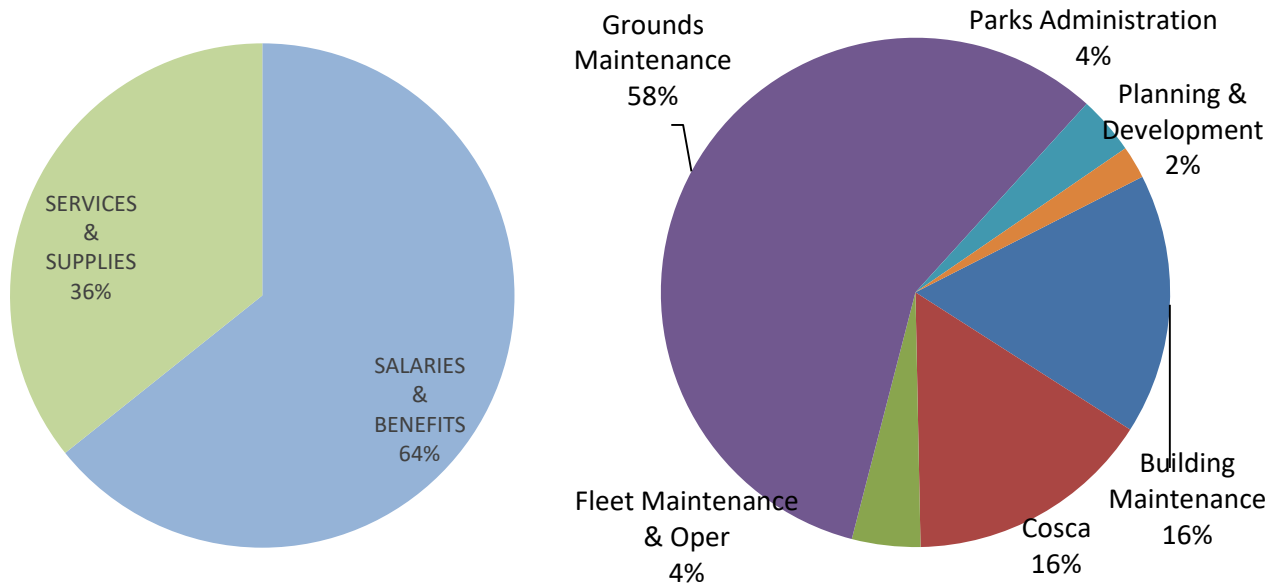
DIVISION BUDGET SUMMARY

DIVISION: Parks & Planning

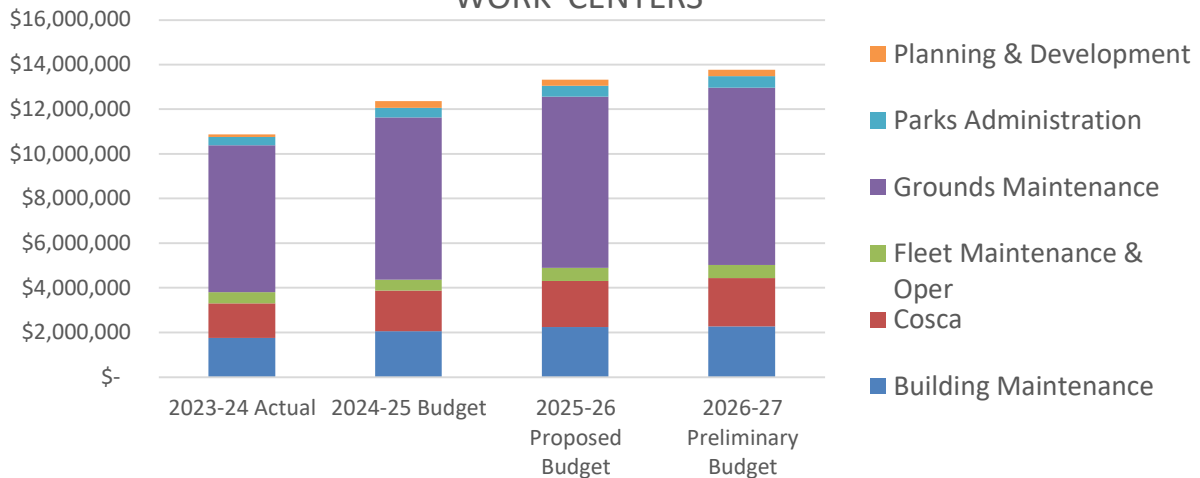
EXPENDITURE CATEGORY	2026-27 Preliminary Budget
SALARIES & BENEFITS	\$ 8,846,528
SERVICES & SUPPLIES	\$ 4,916,890
CAPITAL OUTLAY	\$ -
TOTAL BUDGET	\$ 13,763,418

Full Time Employees:

54.40

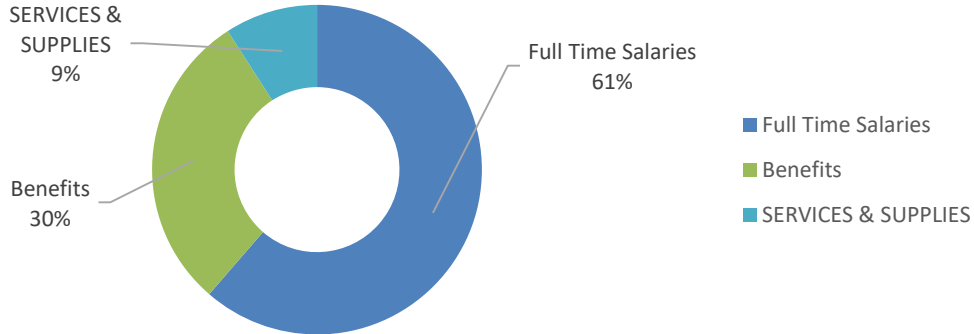


WORK CENTERS



WORK CENTER BUDGET SUMMARY

DIVISION: Parks & Planning
WORK CENTER: Administration



EXPENDITURE CATEGORY	2026-27 Preliminary Budget
SALARIES & BENEFITS	\$ 461,981
<i>Full Time Salaries</i>	\$ 311,804
<i>Part Time Salaries</i>	\$ -
<i>Benefits</i>	\$ 150,177
SERVICES & SUPPLIES	\$ 46,200
CAPITAL OUTLAY	
TOTAL BUDGET	\$ 508,181

Full Time Employees **1.96**

Work Center Description

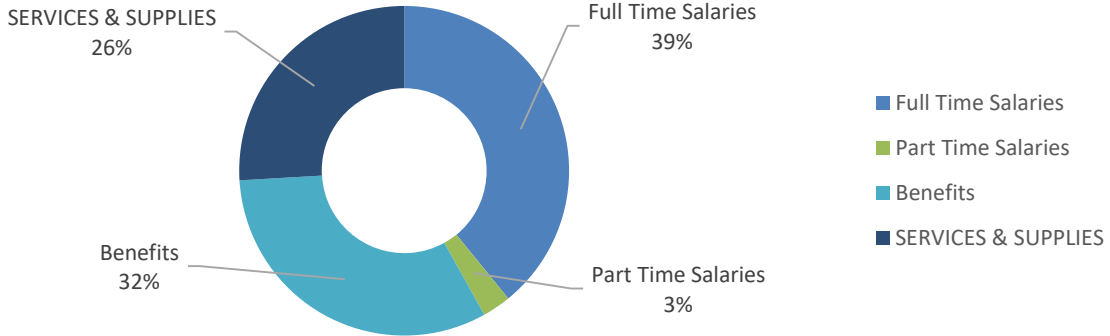
Responsible for overall administration of the Parks and Planning Division operations and administration of 3 separate assessment districts. The Parks Division is divided into 6 work centers: Administration, Planning and Development, Grounds, Building, Fleet and COSCA Rangers. The Division is responsible for maintaining, repairing and enhancing all aspects of the District's over 48 developed park sites encompassing 586 acres. COSCA Rangers help protect approximately 15,000 acres of natural resources and open space in the District through trail construction and maintenance, interpretive programs and law enforcement. Using the Capital Improvement Project Budget as the approved work list, the Parks and Planning Division focuses on new park development, new facilities and capital replacement and improvement projects for aging park facilities.

Work Center Community Benefit

Provides administrative oversight of the maintenance/operations, development, and acquisition of developed parks and open spaces for community enjoyment and use.

WORK CENTER BUDGET SUMMARY

DIVISION: Parks and Planning
WORK CENTER: Building Maintenance



EXPENDITURE CATEGORY	2026-27 Preliminary Budget
SALARIES & BENEFITS	\$ 1,687,206
<i>Full Time Salaries</i>	\$ 890,871
<i>Part Time Salaries</i>	\$ 63,851
<i>Benefits</i>	\$ 732,484
SERVICES & SUPPLIES	\$ 590,800
TOTAL BUDGET	\$ 2,278,006

Full Time Employees **9.60**

Work Center Description

Responsible for maintaining and repairing five community centers, and dozens of additional structures including restrooms, picnic structures, maintenance shops, and buildings of historical significance such as McCrea Ranch, Crowley house, Stagecoach Inn Museum and other structures. In addition, staff maintains all hardscapes and specialty areas such as the skate park, fences, parking lots, sidewalks, lighting, utilities (water, sewer, electrical systems, heating ventilation and air conditioning systems) et al. These tasks are accomplished by skilled crafts people and involves painting, carpentry, masonry, electrical, plumbing, concrete, metal fabrication, welding and other skilled tasks. Staff also represents the District by professionally dealing with patron concerns and issues, staff special events, and responding to emergencies.

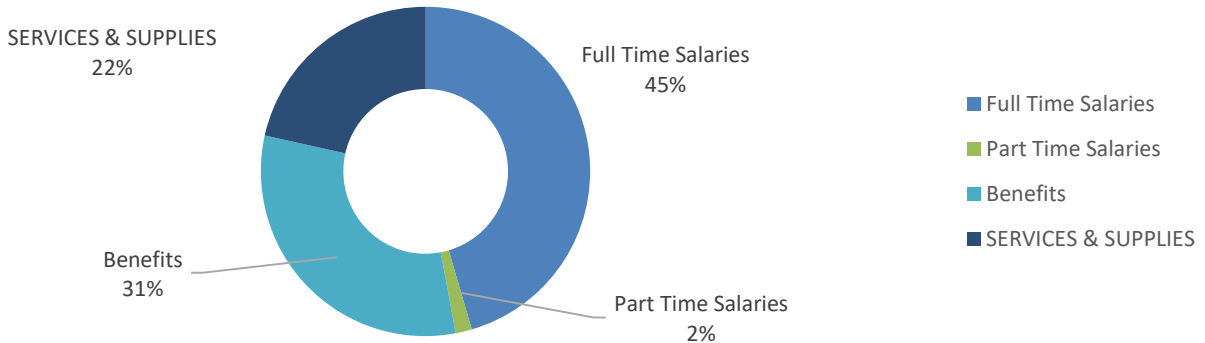
Work Center Community Benefit

The work unit provides invaluable service to our community and visitors to the District. Through skilled and dedicated minds and hands we maintain, improve, and protect the infrastructure and assets entrusted to the District by our community. We provide a safe and inviting environment for families and individuals to play, learn and relax through attractive and functional facilities of all types. With out efforts, we aim to equip our recreation and sports units with safe and effective spaces where they can carry out their passion for serving people.

WORK CENTER BUDGET SUMMARY

DIVISION: Parks and Planning
WORK CENTER: COSCA

COSCA



EXPENDITURE CATEGORY	2026-27 Preliminary Budget	
SALARIES & BENEFITS	\$	1,690,330
	<i>Full Time Salaries</i>	\$ 979,117
	<i>Part Time Salaries</i>	\$ 34,266
	<i>Benefits</i>	\$ 676,947
SERVICES & SUPPLIES	\$	463,200
TOTAL BUDGET	\$	2,153,530

Full Time Employees

10.35

Work Center Description

Responsible for the development, management and maintenance of approximately 15,000 acres of open space including 150 linear miles of trails, archeological features, cultural sites, water courses, endangered and threatened plant communities and protected wildlife. In addition, staff members are the stewards of our public open space lands. Rangers protect our community's resources through law enforcement, interpretive programs, special events such as trail work days & trail education days, and our year-round vegetation management program which involves brush clearance and management of over 1,000,000 square feet of grass lands in conjunction with the Ventura County Fire Department. Rangers identify and flag new hiking trails for development and maintain trails with a keen eye for environmental sensitivity and public safety. Continual efforts are made to eradicate exotic and non-native plants so as to maintain the delicate eco-systems needed to sustain plant and animal communities which range from deer and mountain lion to the western pond turtle. Finally, Rangers are annually involved with numerous construction projects which enable park visitors to safely traverse and enjoy open space lands. Rangers provide staff support for special events and respond to emergencies. Beginning with FY 2021-22, budgets include funds each year to support additional field operations and ranger services.

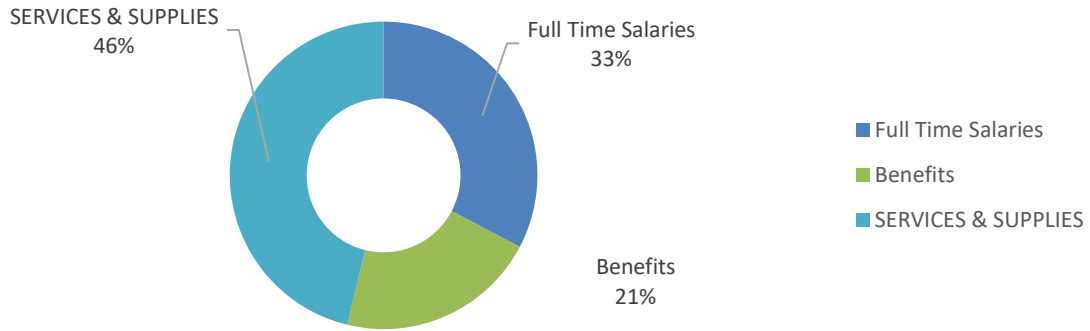
Work Center Community Benefit

COSCA preserves, protects, and manages open space resources throughout Thousand Oaks. It offers a readily accessible refuge from urbanization, preserved native habitats, access to wild flora and fauna, outdoor recreation and education, and trail based public enjoyment. Additionally, open spaces visually and financially enhance the community while also enhancing the peoples connection to nature.

WORK CENTER BUDGET SUMMARY

DIVISION: Parks and Planning
WORK CENTER: Fleet Maintenance

Fleet Maintenance



EXPENDITURE CATEGORY	2026-27 Preliminary Budget
SALARIES & BENEFITS	\$ 321,632
<i>Full Time Salaries</i>	\$ 195,495
<i>Part Time Salaries</i>	
<i>Benefits</i>	\$ 126,137
SERVICES & SUPPLIES	\$ 276,200
CAPITAL OUTLAY	\$ -
TOTAL BUDGET	\$ 597,832

Full Time Employees

2.11

Work Center Description

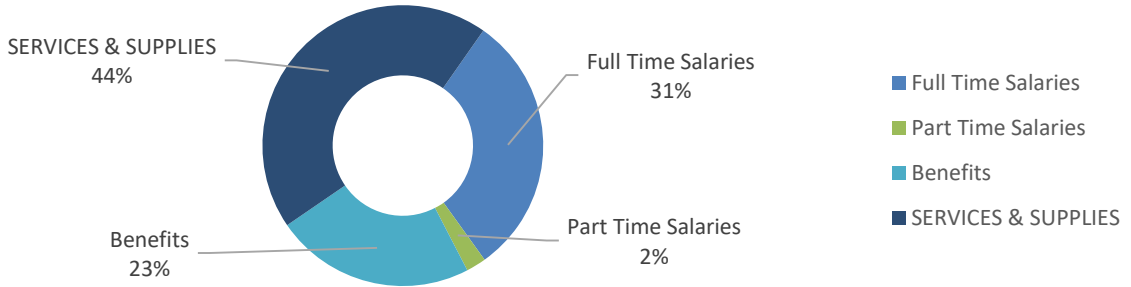
Responsible for maintaining and providing approximately 450 motorized units in safe working condition to all of our maintenance staff so they can accomplish their assigned tasks effectively. These units include work trucks, dump trucks, fleet cars, tractors, trailers, mowers, vacuums, trenchers, chain saws, edgers, generators, and many other units. Staff also specifies and secures new vehicles and equipment through the competitive bidding process.

Work Center Community Benefit

The work of the fleet department supports District staff so they can carry out essential community services. Through preventative maintenance, the fleet department prevents costly repairs and premature replacements, ultimately reducing expenses. The unit also supports local businesses and vendors through procurement of parts, vehicles and equipment.

WORK CENTER BUDGET SUMMARY

DIVISION: Parks and Planning
WORK CENTER: Grounds Maintenance



EXPENDITURE CATEGORY	2026-27 Preliminary Budget
SALARIES & BENEFITS	\$ 4,420,508
<i>Full Time Salaries</i>	\$ 2,411,101
<i>Part Time Salaries</i>	\$ 182,705
<i>Benefits</i>	\$ 1,826,702
SERVICES & SUPPLIES	\$ 3,517,700
TOTAL BUDGET	\$ 7,938,208

Full Time Employees **28.88**

Work Center Description

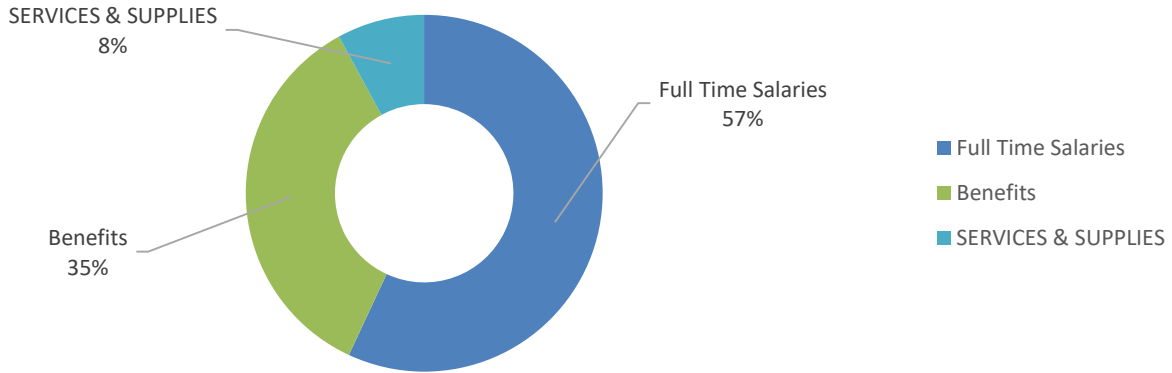
Responsible for maintaining and managing 48 developed park sites composed of 586 acres including sports turf, passive turf, picnic structures and amenities, ball fields, tennis courts and volley-ball courts among others. Grounds staff maintains equestrian areas and specialty facilities such as the Dog Park, Community Garden, Chumash Center, McCrea Ranch, Stagecoach Inn and others. The District's trees, landscape planters, ornamental water works, flood control stream beds, play equipment and other appurtenances are also managed by the Grounds Crews. In addition, staff manages many acres of undeveloped park land that require cyclic maintenance and annual vegetation management. Specific tasks include turf management, arboriculture, pest control, equipment operation, irrigation, fertilization, waste management, park and play area inspections, maintenance and repair, emergency response, and special events staffing. Combining these specific tasks and responsibilities with a commitment to customer service, the Grounds Crews take pride in providing safe, clean and aesthetically enjoyable parks. Increase in services and supplies reflects additional resources for drought-related landscape enhancement and beautification.

Work Center Community Benefit

The Grounds unit provides safety, accessibility, playability, beauty and pride in the District. Grounds welcomes suggestions and collaborations with user groups to keep up with the demands of current and future demographic needs.

WORK CENTER BUDGET SUMMARY

DIVISION: Parks and Planning
WORK CENTER: Planning and Development



EXPENDITURE CATEGORY	2026-27 Preliminary Budget
SALARIES & BENEFITS	\$ 264,871
<i>Full Time Salaries</i>	\$ 163,788
<i>Part Time Salaries</i>	
<i>Benefits</i>	\$ 101,083
SERVICES & SUPPLIES	\$ 22,790
TOTAL BUDGET	\$ 287,661

Full Time Employees

1.50

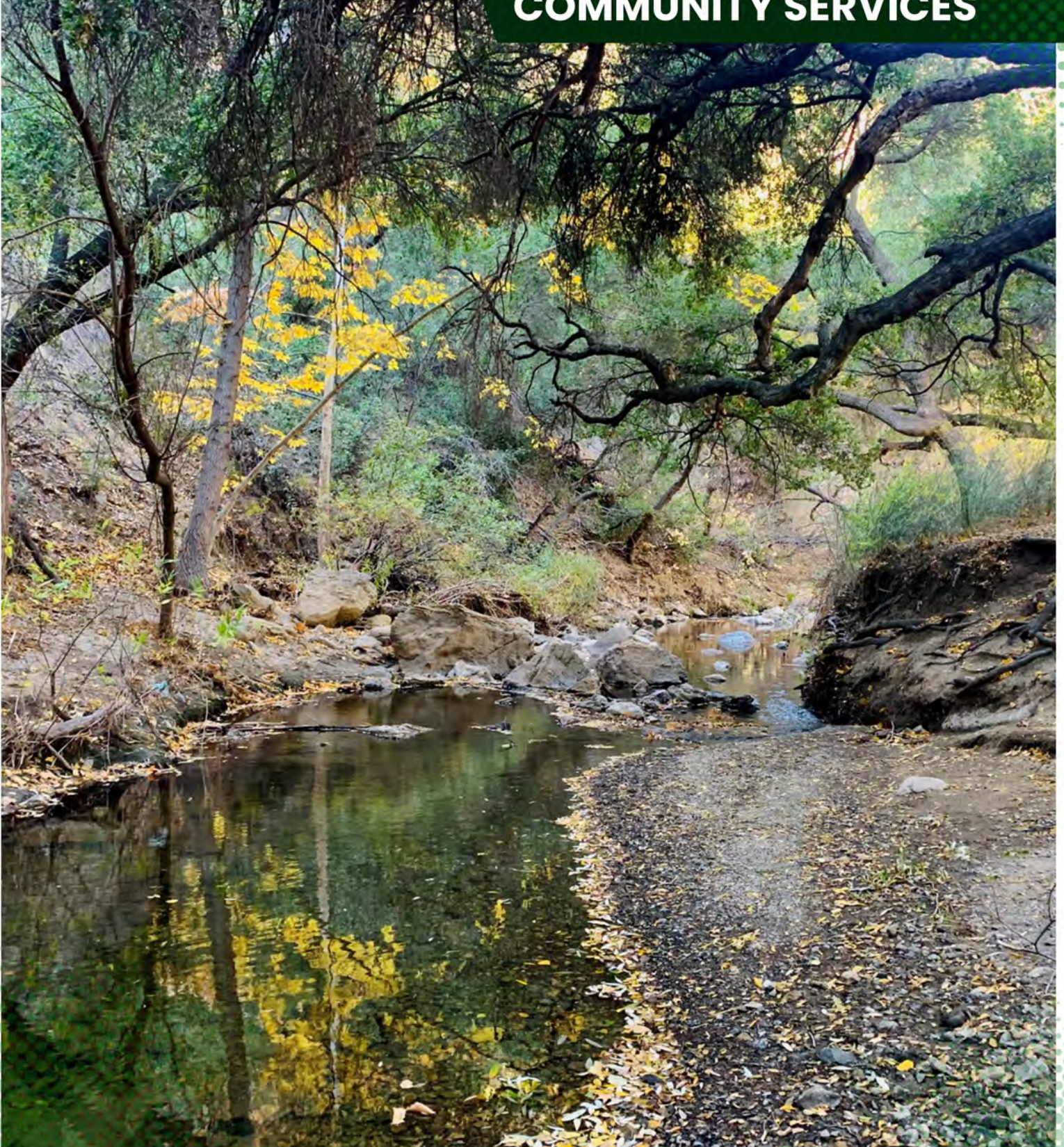
Work Center Description

Responsible for the planning and implementation (construction management) of the District's parks and facilities. Planning projects include advance studies, community outreach, site analysis, master planning, environmental documentation and construction documents. Construction management tasks include contract administration, scheduling, and construction inspection. The Planning Division also oversees the Capital Improvement Program, park dedication fee collection, management of grants and grant opportunities, wireless facility lease agreements and coordination of the District Parks & Planning Division's contributions to the City's Geographic Information System (GIS).

Work Center Community Benefit

Plans, develops, and renovates park sites to meet the interest and use of the community.

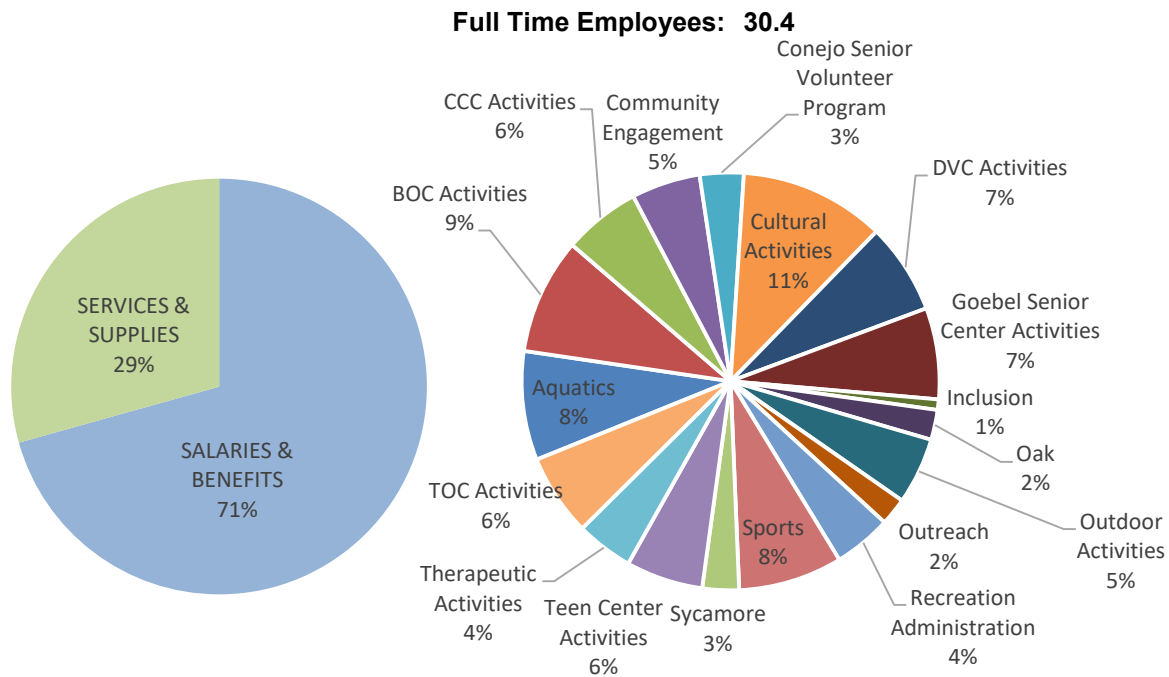
RECREATION & COMMUNITY SERVICES



DIVISION BUDGET SUMMARY

DIVISION: Recreation and Community Services

EXPENDITURE CATEGORY	2026-27 Preliminary Budget
SALARIES & BENEFITS	\$ 10,077,523
SERVICES & SUPPLIES	\$ 4,185,580
CAPITAL OUTLAY	\$ -
TOTAL BUDGET	\$ 14,263,103



The overall direction of the Recreation and Community Services Division, which includes two Management Teams supporting the units below and Community Engagement, is to guide, supervise and aid in strategic planning. The Division works with the Parks and Planning and Management Services

Oak Team

- Thousand Oaks Community Center
- Dos Vientos Community Center
- Westlake Programs
- Cultural Arts
- Teen Center
- Youth Outreach
- Aquatics

Sycamore Team

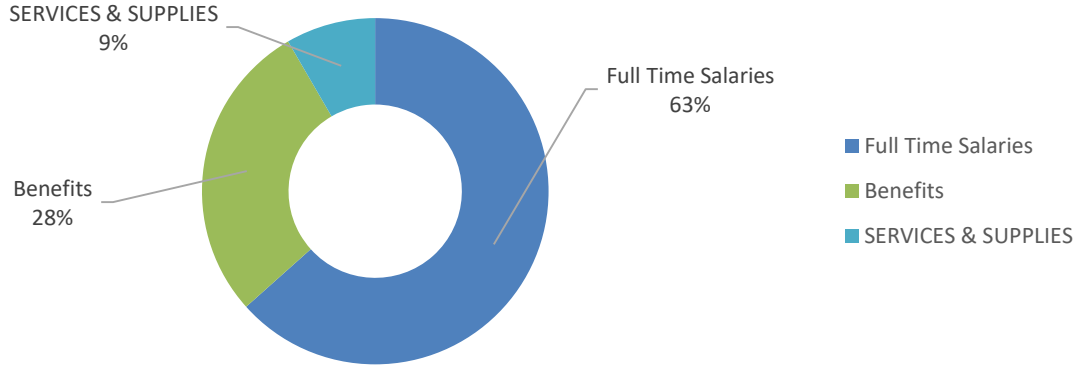
- Borchard Community Center
- Conejo Community Center
- Goebel Adult Community Center
- Conejo Senior Volunteer Program
- Therapeutic Recreation and Inclusion
- Sports

Community Engagement

- Marketing
- Social Media
- Program Guide
- Registration
- Reservations

WORK CENTER BUDGET SUMMARY

DIVISION: Recreation and Community Services
WORK CENTER: Administration



EXPENDITURE CATEGORY	2026-27 Preliminary Budget
SALARIES & BENEFITS	\$ 586,468
<i>Full Time Salaries</i>	\$ 405,684
<i>Part Time Salaries</i>	
<i>Benefits</i>	\$ 180,784
SERVICES & SUPPLIES	\$ 53,700
TOTAL BUDGET	\$ 640,168

Full Time Employees: **2.40**

Work Center Description

This is the leadership and support for the Recreation and Community services Division. We set the best practices, monitor the safety protocol and support the staff in the Division.

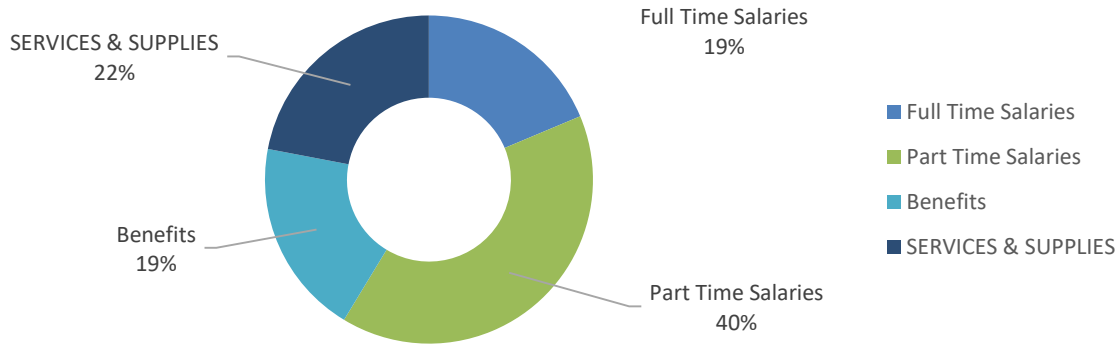
Work Center Community Benefit

We provide oversight, training, and staff support for all programs. This provides families with safe, enriching, and engaging programming. All of this helps develop and support our youth, adults, and families in our communities.

WORK CENTER BUDGET SUMMARY

DIVISION: Recreation and Community Services

WORK CENTER: Aquatics



EXPENDITURE CATEGORY	2026-27 Preliminary Budget
SALARIES & BENEFITS	\$ 938,607
<i>Full Time Salaries</i>	\$ 224,787
<i>Part Time Salaries</i>	\$ 481,129
<i>Benefits</i>	\$ 232,691
SERVICES & SUPPLIES	\$ 264,825
TOTAL BUDGET	\$ 1,203,432

Full Time Employees:

2.00

Work Center Description

Aquatics is year-round and designed to provide individuals of all ages with opportunities to engage in water activities, learn essential swimming skills, and enjoy recreational aquatic experiences. We offer a variety of programs, including: Recreational Swim, Swim Instruction, Lifeguard Training & Certifications in American Red Cross courses. Swim team, lap swimming, and aquatic fitness classes. Our locations ensure accessibility and convenience for the community. These locations include: Community Pool at California Lutheran University (CLU) Thousand Oaks High School & Newbury Park High School Pools – Seasonal summer programming, including swim lessons and recreational swim sessions. We also have special events & rentals.

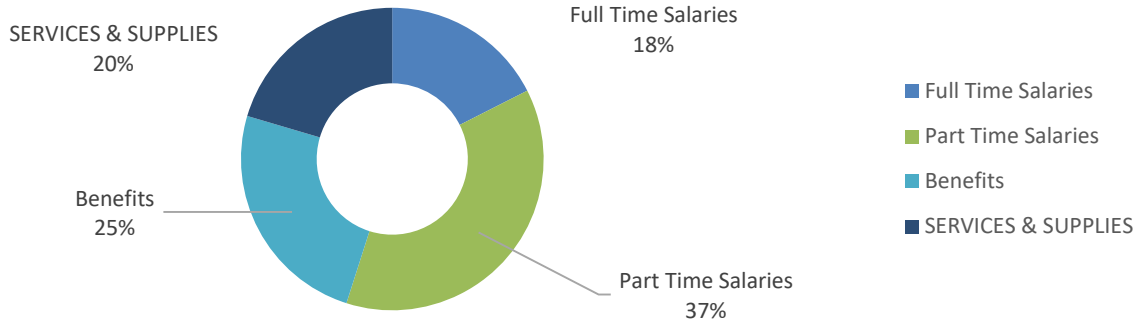
Work Center Community Benefit

Providing a safe, engaging, and enriching aquatic experience for individuals and families while continuously expanding our offerings to meet the needs of the community. Swimming is the only sport that will save your life.

WORK CENTER BUDGET SUMMARY

DIVISION: Recreation and Community Services

WORK CENTER: BOC Activities



EXPENDITURE CATEGORY	2026-27 Preliminary Budget
SALARIES & BENEFITS	\$ 1,020,340
<i>Full Time Salaries</i>	\$ 224,787
<i>Part Time Salaries</i>	\$ 479,000
<i>Benefits</i>	\$ 316,553
SERVICES & SUPPLIES	\$ 261,550
TOTAL BUDGET	\$ 1,281,890

Full Time Employees: **2.00**

Work Center Description

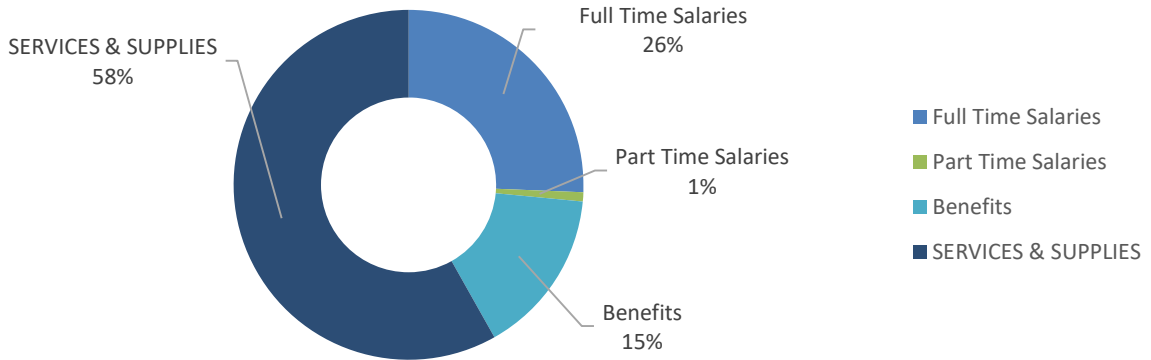
Borchard is an extremely busy and thriving center. In addition to staff and contact-taught classes, the center has a variety of community user groups and sports organizations that utilize its indoor and outdoor facilities. Borchard is the home of the districts only skatepark open to the general public, and provides for both passive and active use. Offsite Borchard Center works closely with CVUSD, holding programs and summer camps on local school campuses, off-site skate programs, and outreach in collaboration with Safe Passage Youth Foundation. Borchard is a well-used facility in Newbury Park for large and small events, meetings, and more.

Work Center Community Benefit

The Borchard Community Center is a vital hub for the Newbury Park community, offering diverse recreational opportunities for individuals of all ages. They also partner with CVUSD on afterschool facilities for school sports. Through active and passive programming, Borchard enhances public health, fosters economic development, and strengthens social connections, contributing to a greater sense of community. Its programs serve all age groups, from early childhood initiatives that support social and academic readiness for kindergarten to senior programs that promote health, activity, and social engagement. Additionally, Borchard staff extends its impact beyond the center by partnering with the Safe Passage Youth Foundation to provide outreach programs for at-risk youth in Newbury Park.

WORK CENTER BUDGET SUMMARY

DIVISION: Recreation and Community Services
WORK CENTER: Community Engagement



EXPENDITURE CATEGORY	2026-27 Preliminary Budget
SALARIES & BENEFITS	\$ 318,514
<i>Full Time Salaries</i>	\$ 195,473
<i>Part Time Salaries</i>	\$ 6,401
<i>Benefits</i>	\$ 116,640
SERVICES & SUPPLIES	\$ 442,900
CAPITAL OUTLAY	\$ -
TOTAL BUDGET	\$ 761,414

Full Time Employees: **2.00**

Work Center Description

The Marketing Department serves as the voice and creative engine behind CRPD, ensuring that our parks, recreation programs, and open spaces remain visible, engaging, and accessible to the community. We provide marketing support for the entire District, creating strategic communications that promote CRPD's offerings and enhance public engagement.

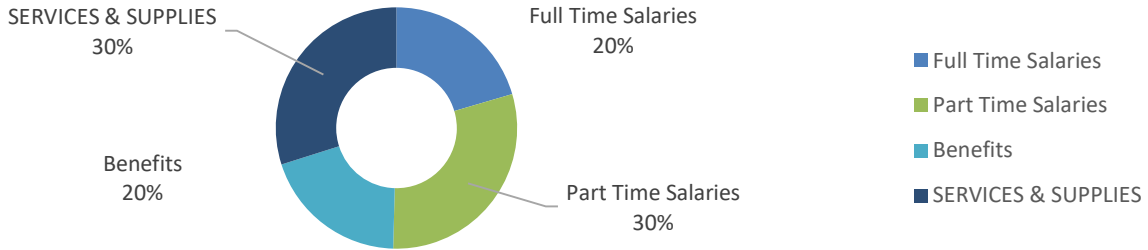
Work Center Community Benefit

CRPD's Marketing Dept plays a key role in connecting the community to the district's parks, programs, and open spaces--- enhancing quality of life. By raising awareness of recreational opportunities and promoting events, the department helps residents get involved, stay active, and engaged with their surroundings. It also fosters community engagement, encourages healthy lifestyles, and ensures accessibility through the information we provide about programs and events. The Marketing Department strengthens connections with our neighbors that builds a sense of belonging, and contributes to a healthier, more vibrant community.

WORK CENTER BUDGET SUMMARY

DIVISION: Recreation and Community Services

WORK CENTER: CSVP



EXPENDITURE CATEGORY	2026-27 Preliminary Budget
SALARIES & BENEFITS	\$ 338,854
<i>Full Time Salaries</i>	\$ 98,892
<i>Part Time Salaries</i>	\$ 145,000
<i>Benefits</i>	\$ 94,962
SERVICES & SUPPLIES	\$ 144,600
CAPITAL OUTLAY	
TOTAL BUDGET	\$ 822,308

Full Time Employees:

1.00

Work Center Description

The Conejo Senior Volunteer Program (CSVP) is proud to engage over 800 volunteers aged 55 and older. Volunteering allows individuals to give back to the community while exploring their unique talents and interests. Our volunteers assist at various locations across the Conejo Valley, including the Los Robles Hospital, Bank of America Performing Arts Center, local schools, clinics, and other nonprofit organizations. The CSVP Advisory Council operates a boutique that serves as a fundraiser to support the Annual Recognition Luncheon while actively fundraising to generate revenue for ongoing program support. Additionally, CSVP leads vital community programs, including the Senior Nutrition Program, Goebel Café, and the Free Income Tax Program.

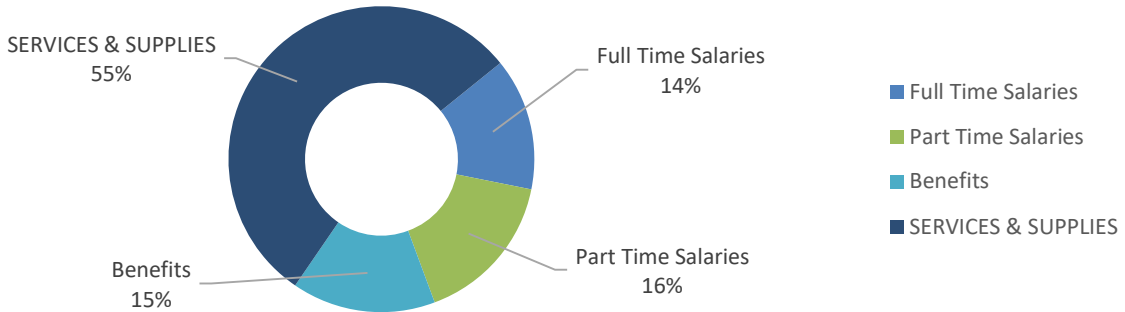
Work Center Community Benefit

Volunteering profoundly impacts our community by supporting nonprofits, enhancing well-being, and boosting the local economy. For volunteers, the benefits are equally significant, including improved mental health through reduced stress, better mood, and increased self-esteem. Volunteering fosters a sense of purpose and accomplishment while offering social benefits like meeting new people and building friendships. It's truly a win-win, enriching both the community and the lives of those who give their time and talents. According to Independent Sector research, CSVP yearly volunteer hours are valued at over 5 million dollars in human resource contributions.

The CSVP Free Income Tax Program is comprised of 47 volunteers who serve 6,000 hours each year. They prepared over 2,500 income tax returns last year. This program brings over one million dollars back to our community.

WORK CENTER BUDGET SUMMARY

DIVISION: Recreation and Community Services
WORK CENTER: Cultural Activities



EXPENDITURE CATEGORY	2026-27 Preliminary Budget
SALARIES & BENEFITS	\$ 728,929
<i>Full Time Salaries</i>	\$ 224,787
<i>Part Time Salaries</i>	\$ 259,836
<i>Benefits</i>	\$ 244,306
SERVICES & SUPPLIES	\$ 877,650
TOTAL BUDGET	\$ 1,606,579

Full Time Employees: **2.00**

Work Center Description

The Hillcrest Center for the Arts is dedicated to providing, expanding and improving education and entertainment opportunities in the arts and culture. Working with other community agencies including the Conejo Valley Unified School District, the City of Thousand Oaks, TOArts and the Conejo Schools Foundation, the Hillcrest Center for the Arts works together with over 15 different cultural organizations to offer: performing arts productions; art, dance and music performance; fitness, writing, visual and performing arts classes; rehearsal space, and rental spaces for a wide variety of member and community organization meetings, programs and events. This unit helps run the Elementary Music program that provides band, strings, and chorus before or after school at numerous elementary schools in the district. This unit is home to the award-winning Young Artist Ensemble, which includes the family theatre, Hillcrest Players, Teen Summer Musical, Conejo Theatre for Everyone, and our Teen Drama programs.

Work Center Community Benefit

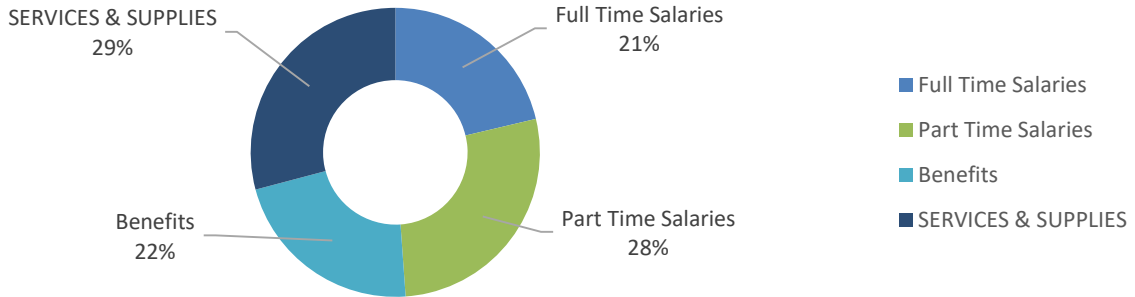
Through a wide-variety of classes and programs, Hillcrest Center for the Arts enhances access to diverse artistic experiences, fosters personal creativity and growth, and creates a sense of belonging.

Through its many programs bringing people together HCFA promotes a sense of community, supports local performers and artists and contributes to the economy by employing local instructors, attracting visitors and stimulating cultural tourism.

WORK CENTER BUDGET SUMMARY

DIVISION: Recreation and Community Services

WORK CENTER: DVC Activities



EXPENDITURE CATEGORY	2026-27 Preliminary Budget
SALARIES & BENEFITS	\$ 711,056
<i>Full Time Salaries</i>	\$ 213,632
<i>Part Time Salaries</i>	\$ 276,873
<i>Benefits</i>	\$ 220,551
SERVICES & SUPPLIES	\$ 292,600
CAPITAL OUTLAY	\$ -
TOTAL BUDGET	\$ 1,003,656

Full Time Employees: 2.00

Work Center Description

The Dos Vientos Community Center offers a variety of educational opportunities, including onsite Preschool/pre-K programs, afterschool enrichment, and structured recess programs on School campuses.

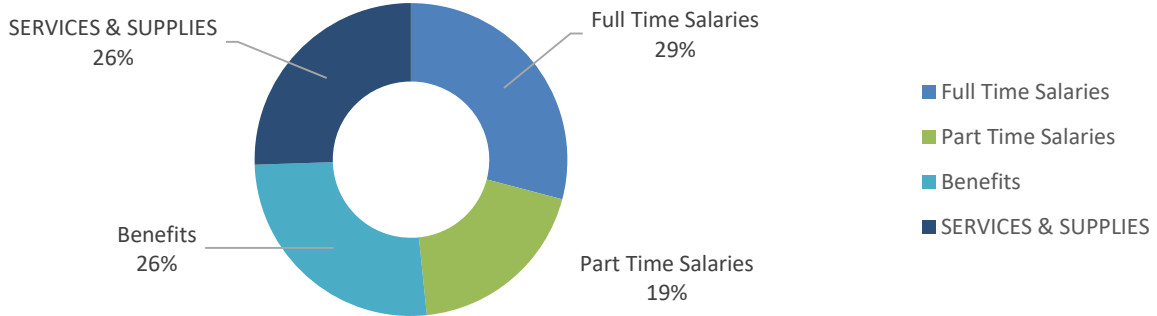
The center's partnerships with local organizations, such as Rancho Potrero , CVUSD and the City of Westlake, create a network of support and resources that benefit the entire community. Recreation is a key aspect of the center's offerings with opportunities for athletics, specialized classes, outdoor activities, arts , performing arts, and healthy living programs for all ages. The center also serves as a hub for volunteer opportunities, facility rentals for private, community and outreach groups. The center takes the lead on Bark in the Park , Great Conejo Camp-Out, and the 4th of July Fireworks show.

Work Center Community Benefit

The Dos Vientos Community Center enhances community well-being through educational programs that promote youth development. We partner with local organizations to provide diverse programs and services which foster unity and shared resources. The recreational activities are for all ages and encourage physical and social interactions. We are also a hub for volunteer opportunities, rentals, and community events, which strengthen the community bond. Lastly, DVC supports workforce development through jobs and provides a safe space during emergencies, ensuring residents' safety and well-being.

WORK CENTER BUDGET SUMMARY

DIVISION: Recreation and Community Services
WORK CENTER: Goebel Adult Center



EXPENDITURE CATEGORY	2026-27 Preliminary Budget
SALARIES & BENEFITS	\$ 749,910
<i>Full Time Salaries</i>	\$ 292,903
<i>Part Time Salaries</i>	\$ 194,030
<i>Benefits</i>	\$ 262,977
SERVICES & SUPPLIES	\$ 256,825
CAPITAL OUTLAY	\$ -
TOTAL BUDGET	\$ 1,006,735

Full Time Employees: 3.00

Work Center Description

The 21,000 sq. foot city owned building provides multitudes of programs, activities and services for the Senior/Adult population. The unit also has a non-profit Commission that raises funds through bingo, excursions, and special events. The monies raised help augment CRPD's budget by purchasing equipment and supporting program activities. It is truly a multi-purpose center for the community serving adults. Offerings include fitness programs, discussion groups, educational seminars, support groups, health programs, and volunteer opportunities. The unit partners with a host of social service agencies and community groups to provide services.

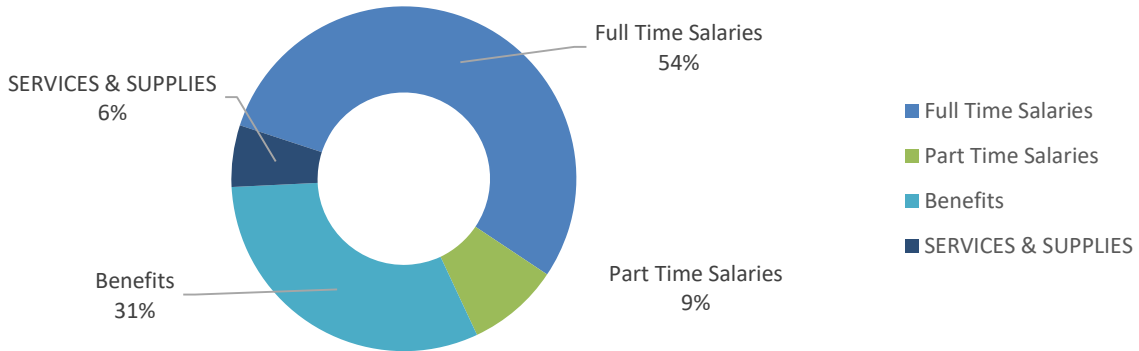
Work Center Community Benefit

The Goebel Adult Community Center is a vital part of the community. The facility is a hub for the senior and older adult population in the community to gather in a welcoming, safe and desirable environment. We provide a wide range of support services, information, resources, assistance, programs and special events tailored to the needs of seniors and older adults. This facility offers valuable opportunities for social interaction, education enrichment and access to recreational activities to enhance the well-being of elderly individuals and giving them the opportunity to be healthy, happy and thrive!

WORK CENTER BUDGET SUMMARY

DIVISION: Recreation and Community Services

WORK CENTER: Inclusion



EXPENDITURE CATEGORY	2026-27 Preliminary Budget
SALARIES & BENEFITS	\$ 109,092
<i>Full Time Salaries</i>	\$ 62,947
<i>Part Time Salaries</i>	\$ 10,000
<i>Benefits</i>	\$ 36,145
SERVICES & SUPPLIES	\$ 6,680
CAPITAL OUTLAY	\$ -
TOTAL BUDGET	\$ 115,772

Full Time Employees: **0.50**

Work Center Description

This work center supports the population that needs or requests accommodations to successfully participate in general population and therapeutic recreation programs. Staff has developed best practices, procedures, and trainings so that the District can better serve the community. Since the unit was established in 2018, staff continues to see an increase in requests for accommodations.

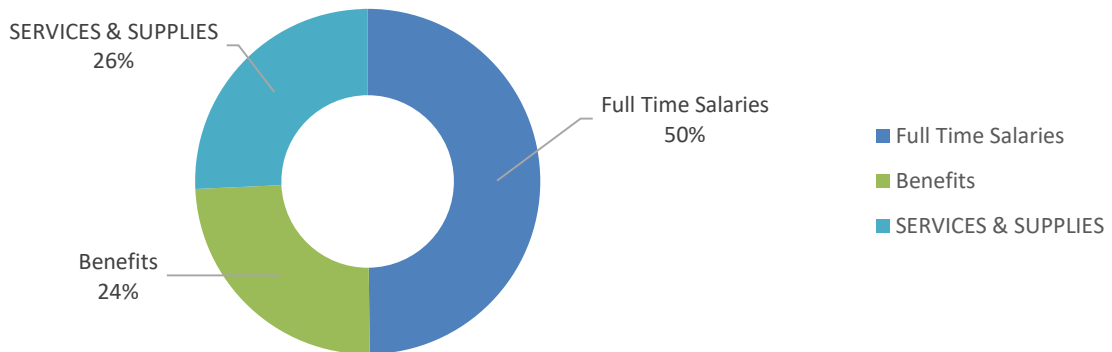
Work Center Community Benefit

Inclusion allows individuals to experience belonging and creates opportunities for agency or choice. Provides benefits such as improved health, improved family dynamics, greater sense of community, and strengthens CRPD's mission.

WORK CENTER BUDGET SUMMARY

DIVISION: Recreation and Community Services

WORK CENTER: Oak Team Manager



EXPENDITURE CATEGORY	2026-27 Preliminary Budget
SALARIES & BENEFITS	\$ 244,524
<i>Full Time Salaries</i>	\$ 163,928
<i>Part Time Salaries</i>	
<i>Benefits</i>	\$ 80,596
SERVICES & SUPPLIES	\$ 84,600
CAPITAL OUTLAY	\$ -
TOTAL BUDGET	\$ 329,124

Full Time Employees:

1.00

Work Center Description

The Oak budget provides oversight for the following operations: Thousand Oaks Community Center, Dos Vientos Community Center, Hillcrest Center for the Arts, Aquatics Unit, and the Teen Center. This budget covers the salary and benefit cost of one Recreation Services Manager as well as funding for several District wide special events and community activities including Bark in the Park, Movies in the Park, fireworks show and rec van programming.

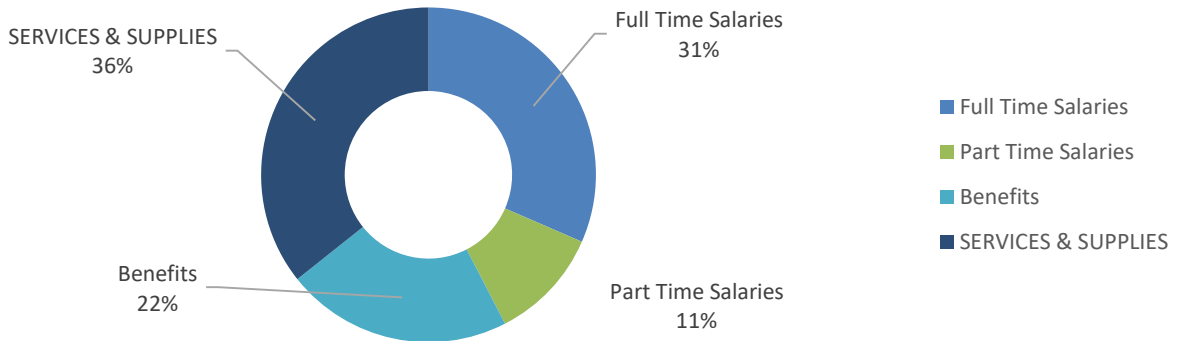
Work Center Community Benefit

The budget provides funding for several free or low cost, beloved community events/programs. It allows the financial and creative flexibility to create new programs that are inclusive to the entire community in the middle of budget years.

WORK CENTER BUDGET SUMMARY

DIVISION: Recreation and Community Services

WORK CENTER: Sports



EXPENDITURE CATEGORY	2026-27 Preliminary Budget
SALARIES & BENEFITS	\$ 738,891
<i>Full Time Salaries</i>	\$ 362,500
<i>Part Time Salaries</i>	\$ 125,237
<i>Benefits</i>	\$ 251,154
SERVICES & SUPPLIES	\$ 410,200
CAPITAL OUTLAY	\$ -
TOTAL BUDGET	\$ 1,149,091

Full Time Employees: 4.00

Work Center Description

This program unit provides a variety of revenue-based athletic activities including adult leagues, pickleball and tennis lessons, classes, tournaments, certifications, and special events. The field distribution process for sports groups and picnic facility reservations are the responsibility of this unit. The unit provides sports camps and other innovative athletic opportunities. Budgets reflect transition of part time staff to full time.

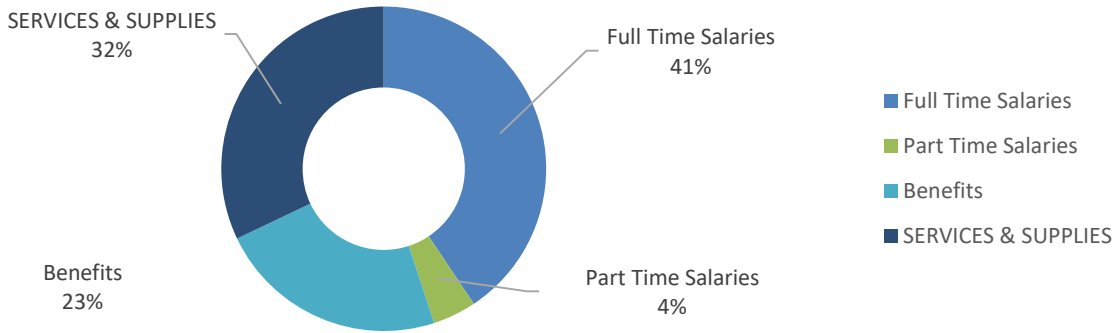
Work Center Community Benefit

This unit provides a public/community benefit by offering facilities and parks for community gatherings, celebrations and events; recreational opportunities that enhance physical, emotional and mental wellbeing; and quality fields for organized youth and adult sports.

WORK CENTER BUDGET SUMMARY

DIVISION: Recreation and Community Services

WORK CENTER: Sycamore Team Manager



EXPENDITURE CATEGORY	2026-27 Preliminary Budget
SALARIES & BENEFITS	\$ 274,060
<i>Full Time Salaries</i>	\$ 163,921
<i>Part Time Salaries</i>	\$ 17,500
<i>Benefits</i>	\$ 92,639
SERVICES & SUPPLIES	\$ 129,400
CAPITAL OUTLAY	\$ -
TOTAL BUDGET	\$ 403,460

Full Time Employees: **1.00**

Work Center Description

The Sycamore budget provides oversight of the following operations; Borchard Community Center, Conejo Community Center and Outdoor Unit, Goebel Adult Community Center, Conejo Senior Volunteer Program, Therapeutic Recreation and Inclusion, Sports, and Picnic/Field Reservations. This budget covers the salary and benefit cost of one Recreation Services Manager and the part-time District Courier as well as funding for several District wide special events and community activities including the Summer Concerts in the Park Series, Flashlight Egg Hunt, Festival de los Muertos, Bark in the Park, Unplugged, Persian New Year, Safe Passage, and Rec Van outreach programs.

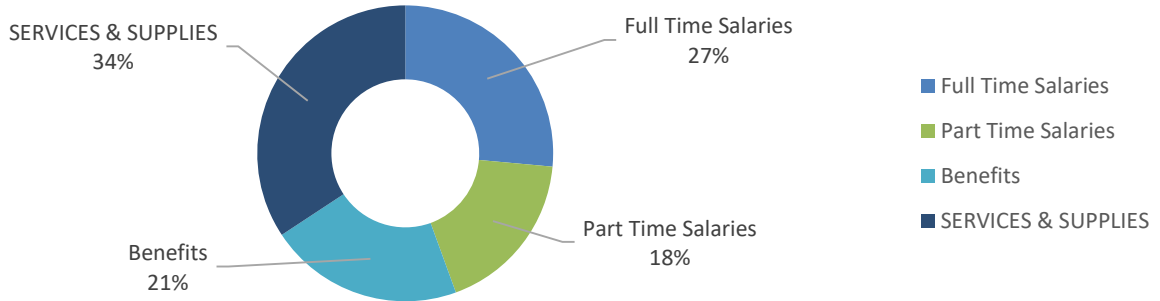
Work Center Community Benefit

The budget provides funding for several free or low cost, beloved community events/programs. It allows the financial and creative flexibility to create new programs that are inclusive to the entire community in the middle of budget years, like the Festival de los Muertos and Rec Van outreach programs.

WORK CENTER BUDGET SUMMARY

DIVISION: Recreation and Community Services

WORK CENTER: Teen Center



EXPENDITURE CATEGORY	2026-27 Preliminary Budget
SALARIES & BENEFITS	\$ 558,824
<i>Full Time Salaries</i>	\$ 224,787
<i>Part Time Salaries</i>	\$ 153,100
<i>Benefits</i>	\$ 180,937
SERVICES & SUPPLIES	\$ 291,350
CAPITAL OUTLAY	\$ -
TOTAL BUDGET	\$ 850,174

Full Time Employees:

2.00

Work Center Description

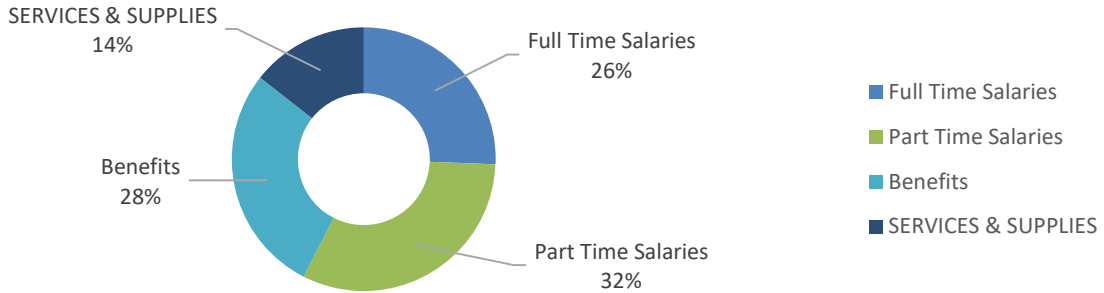
The Alex Fiore Thousand Oaks Teen Center is a city owned building and offers a well-balanced comprehensive program base for teens ages 12 -17 years. Patrons can participate in a variety of structured programs, such as recreational classes, educational workshops, leagues, seasonal camps, excursions, leadership programs, and special events. Drop-in recreation is also available and includes use of a game room, sound proof music room, gymnasium, computer lab, commercial kitchen and outdoor basketball court and skate park. Operational costs are paid for by revenue collection and reimbursement from the City of Thousand Oaks. Changes in services and supplies budgets largely reflect changes in the agreement with the City.

Work Center Community Benefit

Not many communities offer an entire community center just for teens. The teen center is a state of the art facility and a place where teens can be themselves. It offers a safe supervised environment where teens can develop their social and emotional skills while participating in fun quality recreational activities, reducing the likelihood of involvement in risky behaviors. It's a place teens can receive support from peers and staff that understand their challenges. The Teen Center fosters a sense of community by promoting inclusivity and collaboration among diverse youth, strengthening social bonds and encouraging civic engagement.

WORK CENTER BUDGET SUMMARY

DIVISION: Recreation and Community Services
WORK CENTER: Therapeutics



EXPENDITURE CATEGORY	2026-27 Preliminary Budget
SALARIES & BENEFITS	\$ 541,163
<i>Full Time Salaries</i>	\$ 161,839
<i>Part Time Salaries</i>	\$ 201,810
<i>Benefits</i>	\$ 177,514
SERVICES & SUPPLIES	\$ 90,850
CAPITAL OUTLAY	\$ -
TOTAL BUDGET	\$ 632,013

Full Time Employees: **1.50**

Work Center Description

The Therapeutic Recreation Unit provides year-round recreation, sport and leisure programs for children, teens and adults who have difficulty participating in recreation due to the presence of a disability. Participants of Therapeutic Recreation programs include individuals with cognitive, neurological, physical, or emotional disabilities, and/or sensory impairments. Programs offered through the Therapeutic Recreation Unit include sensory and play programs, camps, social skill instruction, sports training, social clubs, hobby classes, cultural arts, outings and trips, family programs, and seasonal special events and life skills programs.

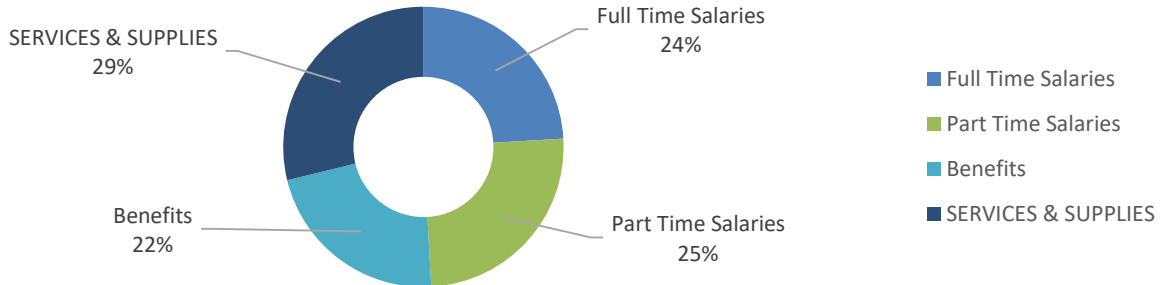
Work Center Community Benefit

Families and individuals have the choice to access segregated and safe recreational programming for individuals with disabilities in the community. The Unit offerings benefit physical, mental, and social improvements such as building strength, cognitive abilities, emotional regulation, reduced anxiety and depression, and improved self-esteem. It also builds a sense of community, improved interpersonal skills, increased access to the community, and builds a support system for family members, which enhances overall quality of life.

WORK CENTER BUDGET SUMMARY

DIVISION: Recreation and Community Services

WORK CENTER: TOC Activities



EXPENDITURE CATEGORY	2026-27 Preliminary Budget
SALARIES & BENEFITS	\$ 641,475
<i>Full Time Salaries</i>	\$ 216,905
<i>Part Time Salaries</i>	\$ 225,800
<i>Benefits</i>	\$ 198,770
SERVICES & SUPPLIES	\$ 259,650
CAPITAL OUTLAY	\$ -
TOTAL BUDGET	\$ 901,125

Full Time Employees: **2.00**

Work Center Description

The Thousand Oaks Center enriches the lives of community members of all ages through various activities and events. We manage both indoor and outdoor facilities and offer programs like the Homeschool Enrichment Program at the Hillcrest Center. CVUSD also uses our fields and gym for many school activities through out the year from 2:30 - 5:00 and some weekends for tournaments.

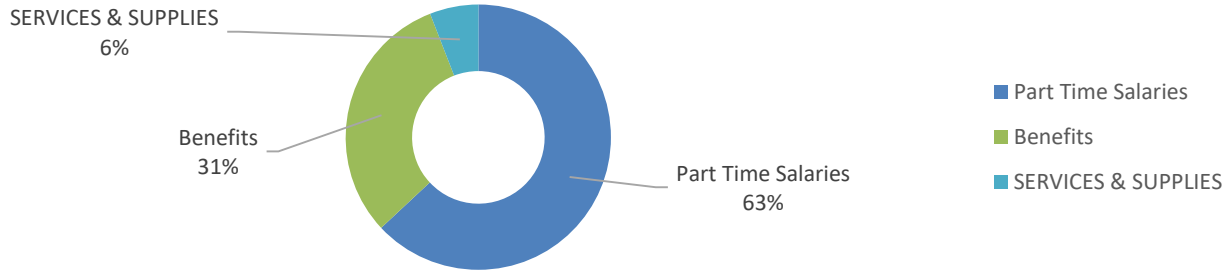
The unit also organizes community-wide events such as Touch-a-Truck, Kids Swap Meet, and Haunted Trail. Overall, we foster a sense of community and provide opportunities for fun, learning, and connection.

Work Center Community Benefit

The Thousand Oaks Center significantly enriches residents' lives by offering various opportunities for enjoyment, education, and social interaction. It is a hub for social connections, nurturing a strong community spirit through diverse programs and special events encouraging active participation. TOC also has a good relationship with CVUSD, which allows athletes to participate in sports through the use of our facilities. Additionally, the center provides a welcoming space for adults and families to engage in free recreational activities, which enhance mental and physical well-being.

WORK CENTER BUDGET SUMMARY

DIVISION: Recreation and Community Services
WORK CENTER: Youth Outreach



EXPENDITURE CATEGORY	2026-27 Preliminary Budget
SALARIES & BENEFITS	\$ 286,665
<i>Full Time Salaries</i>	
<i>Part Time Salaries</i>	\$ 192,198
<i>Benefits</i>	\$ 94,467
SERVICES & SUPPLIES	\$ 18,100
CAPITAL OUTLAY	\$ -
TOTAL BUDGET	\$ 304,765

Full Time Employees: 0.00

Work Center Description

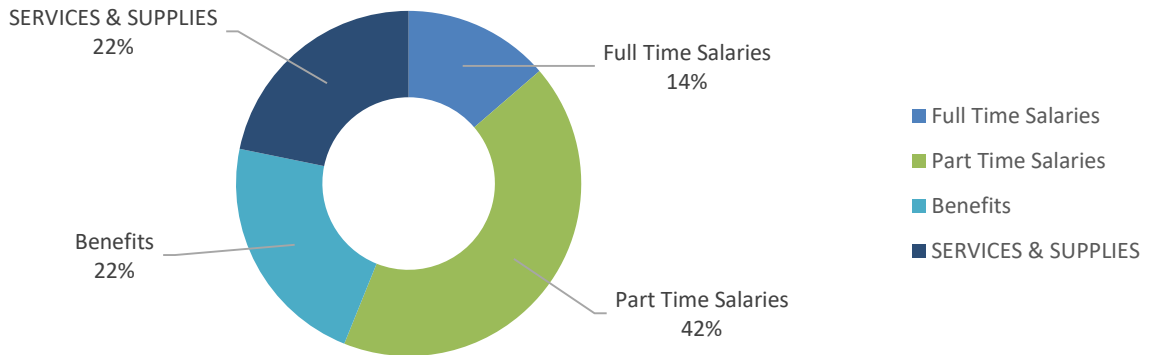
The outreach program, geared to serve our middle and high school students, has been offered for over 40 years. It is a multi-purpose community social service and recreation program. The Outreach Specialist receives referrals to address the needs of uninvolved and hard-to-reach teens. They do this by conducting individual and group sessions during school hours, running the Teen Club programs at under-served apartment complexes, and interacting at the Teen Center. The Conejo Valley Unified School District currently funds up to \$100,000 annually for the Youth Outreach Program.

Work Center Community Benefit

This program provides mentorship to those at risk and underserved, focusing on social and emotional skills. It also helps create a community where youth can feel supported and have access to resources, connecting them with educational and recreational opportunities. The youth who participate have an increased chance to be successful community members.

WORK CENTER BUDGET SUMMARY

DIVISION: Recreation and Community Services
WORK CENTER: CCC Activities



EXPENDITURE CATEGORY	2026-27 Preliminary Budget
SALARIES & BENEFITS	\$ 667,637
<i>Full Time Salaries</i>	\$ 116,930
<i>Part Time Salaries</i>	\$ 361,591
<i>Benefits</i>	\$ 189,116
SERVICES & SUPPLIES	\$ 185,700
TOTAL BUDGET	\$ 853,337

Full Time Employees: **1.00**

Work Center Description

Conejo Community Center provides a wide range of recreational programming serving all ages from infants through seniors. This unit also holds several large scale special events, including the Summer Concerts in the Park series. It also implements the ELOP (Expanded Learning Opportunities Program) Tutoring and Fun Fridays Program through partnerships with CVUSD and the Safe Passage Youth Foundation. Conejo Community Center also provides After School Enrichment, Recess, Dance, and Lunch programs at four nearby Elementary Schools. Facility Supervision is also a function of the unit for indoor and outdoor use.

Work Center Community Benefit

This unit provides the community recreational opportunities, special events, educational programs, and childcare at little to no cost, promoting mental and physical health, cultural enrichment, and community building.

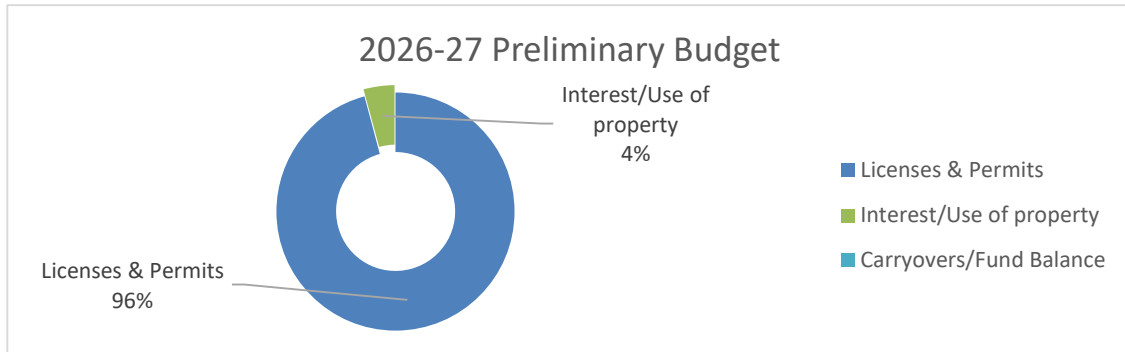
CAPITAL FUND



Conejo Recreation and Park District

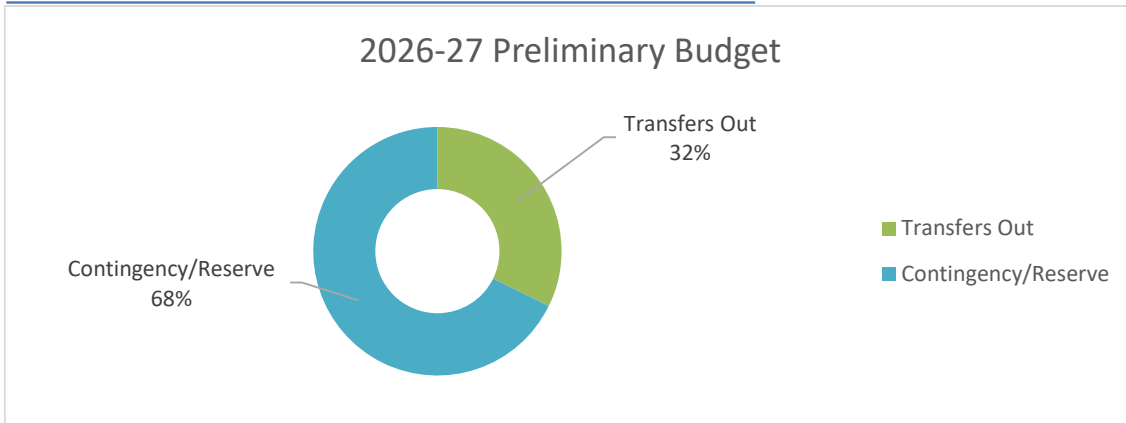
Capital Projects Fund Budget Summary

REVENUES



REVENUE	2026-27 Preliminary Budget
Licenses & Permits	\$ 455,000
Contributions from Others	
Other Income	
Interest/Use of property	\$ 20,000
Transfers In	
Carryovers/Fund Balance	
Total Revenue	\$ 475,000

EXPENDITURES



EXPENDITURES	2026-27 Preliminary Budget
Capital Improvements	
Transfers Out	\$ 150,000
Contingency/Reserve	\$ 315,000
Total Expenditures	\$ 465,000

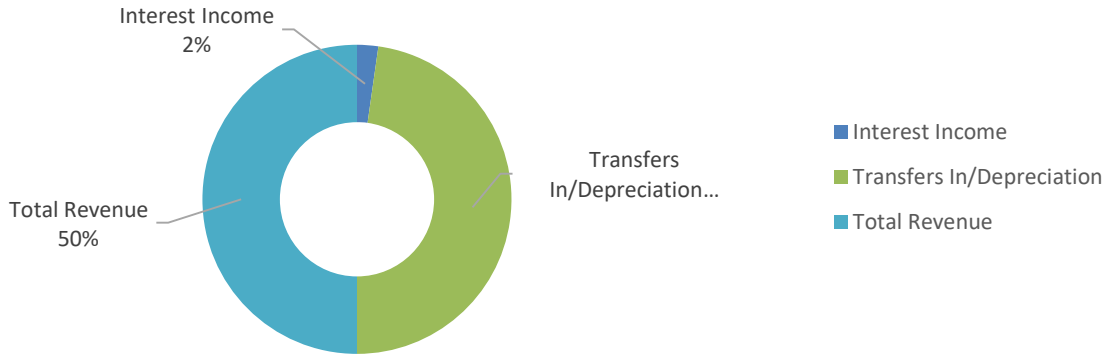
This fund accounts for capital projects not budgeted in the District's three assessment districts.

EQUIPMENT FUND



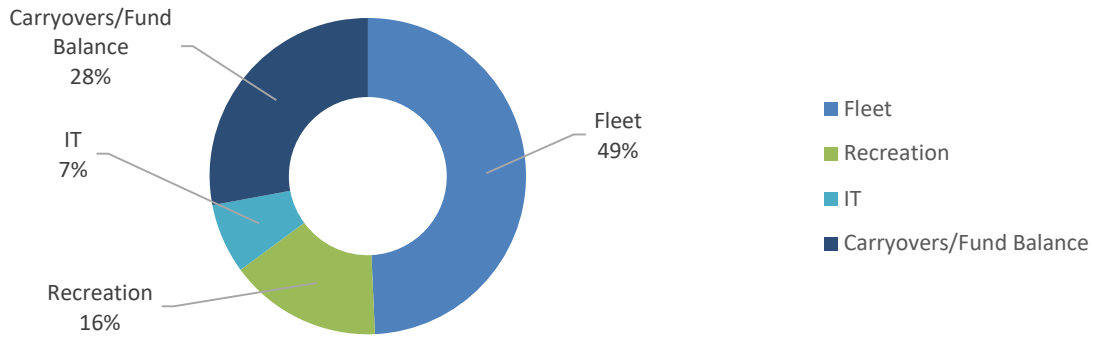
Equipment Replacement Fund Budget Summary

REVENUES



REVENUE	2026-27 Preliminary Budget	
Interest Income	\$	30,000
Transfers In/Depreciation	\$	650,000
Total Revenue	\$	680,000

EXPENDITURES



EXPENDITURES	2026-27 Preliminary Budget	
Fleet	\$	335,000
Recreation	\$	106,351
IT	\$	48,500
Carryovers/Fund Balance	\$	190,149
Total Expenditures	\$	680,000

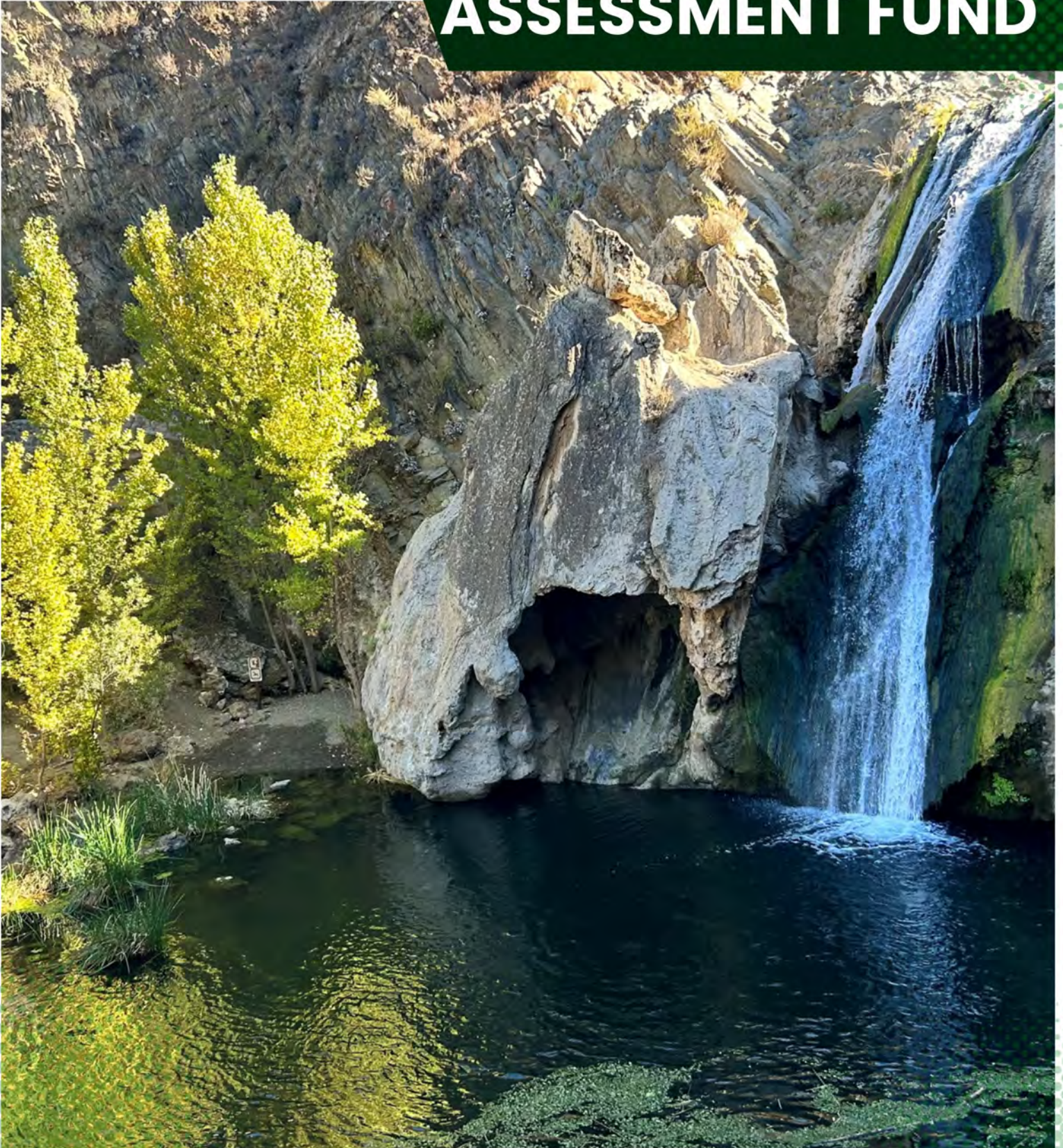
The following assets are proposed for replacement, actual purchases may be adjusted:

FLEET		
3/4 Ton Truck 4X4	\$	80,000
Electric Cart	\$	19,000
Electric Cart	\$	19,000
1/2 Ton Truck	\$	50,000
1/2 Ton Truck	\$	50,000
Small SUV	\$	45,000
Dethatcher Attachment	\$	30,000
Brush Chipper	\$	42,000
Total Fleet	\$	335,000

IT		
25 PC replacements @ \$1,500	\$	37,500
Sonicwall Maintenance/Replacements	\$	8,000
Ubiquiti Replacements	\$	3,000
Total IT	\$	48,500

RECREATION		
9 Square in the Air	\$	999
Adjustable Tables	\$	1,500
AEDs	\$	1,250
Big Wheels / Tricycles	\$	1,500
Black Sheep Curtains 10' by 12'	\$	6,000
Black Sheep Curtains 10' by 6'	\$	3,500
Black Sheep Curtains 10' x 16'	\$	2,500
Butterfly Tables	\$	13,750
Canopies 10x10	\$	5,063
Chaise Lounge Chairs	\$	803
Clear Comfort Canister Cart	\$	10,239
Cricut Machine and Supplies	\$	1,250
Deck Chairs (1 of 2)	\$	675
DeWalt Table Saw Model #DW5780	\$	749
Equipment Totemaster	\$	500
Griddle	\$	625
Gymnastics Spring Board	\$	750
LED gym lights	\$	2,500
Makie 450 Speakers	\$	2,500
Market Umbrellas (2 of 2)	\$	700
Pool Vacuum	\$	6,250
Popcorn Machine	\$	1,125
Portable Basketball Hoops	\$	1,000
Portable Sound System	\$	3,750
Portable TV with Stand	\$	1,625
Refrigerator	\$	625
Refrigerator	\$	2,000
Roland Electric Keyboard w/ Amp	\$	1,500
Scoreboard Console Controller	\$	1,063
ScoreMaster 8' x 24' Soccer Goals (Set of 2)	\$	16,250
Snow Cone Machine	\$	563
Television	\$	2,500
Tuff Shed	\$	10,000
Utility Carts	\$	750
Total Recreation	\$	106,351

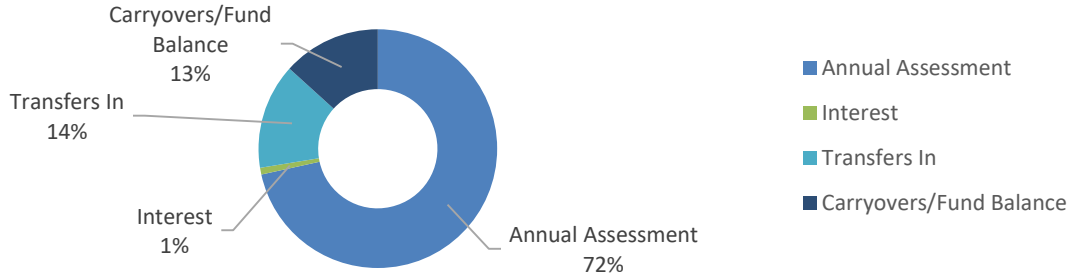
DISTRICT WIDE ASSESSMENT FUND



Conejo Recreation and Park District

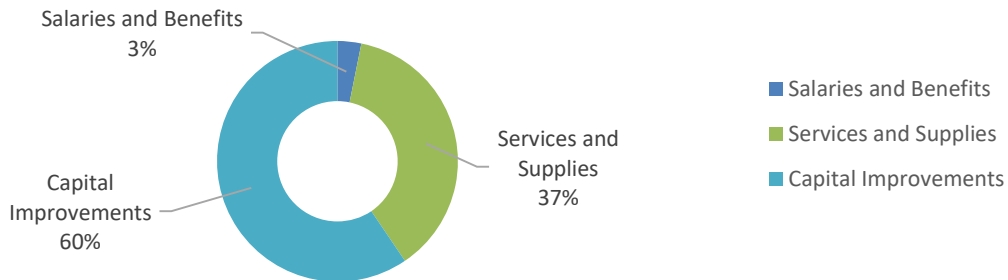
Districtwide Assessment Fund Budget Summary

REVENUES



REVENUE	2026-27 Preliminary Budget
Annual Assessment	\$ 2,364,800
Interest	\$ 30,000
Transfers In	\$ 471,556
Carryovers/Fund Balance	\$ 439,518
Total Revenue	\$ 3,305,874

EXPENDITURES



EXPENDITURES	2026-27 Preliminary Budget
Salaries and Benefits	\$ 105,374
Services and Supplies	\$ 1,234,100
Capital Improvements	\$ 1,966,400
Total Expenditures	\$ 3,305,874

Full Time Employees

0.64

The Park Maintenance and Recreation Improvement District ("Districtwide Assessment") boundaries are coterminous with the boundaries of the Conejo Recreation and Park District. In 1992, local property taxes were shifted to the State - severely limiting the Conejo Recreation and Park District's ability to maintain and improve park and recreational facilities. Cumulatively, this ("ERAF") transfer of local property tax dollars from the Conejo Recreation & Park District to the state is approximately \$64 million from 1992 through FY 25/26. In 2001, property owners created and funded the Districtwide Assessment to provide funds necessary to maintain parks, open space and trails. Total assessments generated to date are about \$39 million. The Districtwide Assessment also provides needed funds to enhance, repair and replace capital facilities.

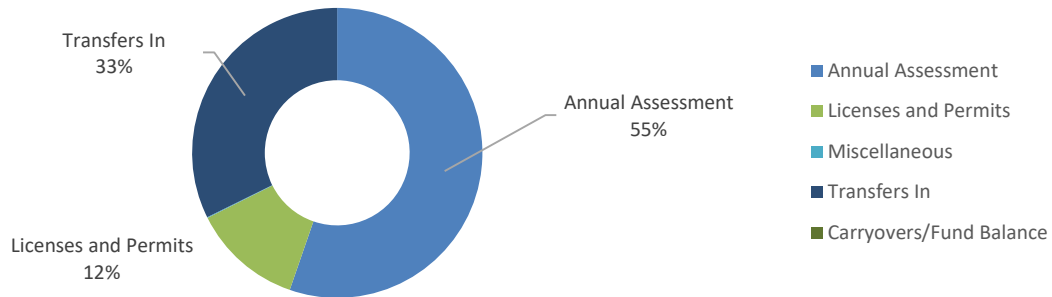
DOS VIENTOS ASSESSMENT DISTRICT FUND



Conejo Recreation and Park District

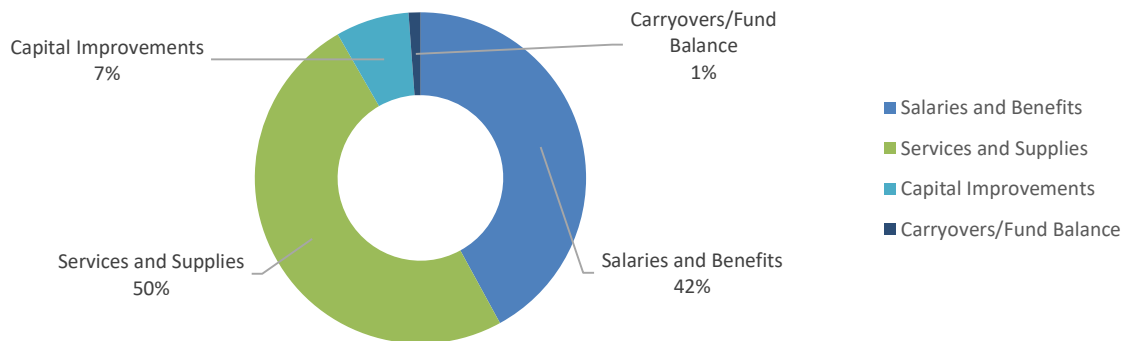
Dos Vientos Fund Budget Summary

REVENUES



REVENUE	2026-27 Preliminary Budget
Annual Assessment	\$ 789,700
Licenses and Permits	\$ 175,500
Miscellaneous	\$ 1,000
Transfers In	\$ 461,512
Carryovers/Fund Balance	
Total Revenue	\$ 1,427,712

EXPENDITURES



EXPENDITURES	2026-27 Preliminary Budget
Salaries and Benefits	\$ 599,812
Services and Supplies	\$ 708,900
Capital Improvements	\$ 102,500
Carryovers/Fund Balance	\$ 16,500
Total Expenditures	\$ 1,427,712

Full Time Employees

4.08

Assessment District boundaries include properties within the master-planned community of Dos Vientos Ranch. The Assessment District was created to improve and maintain four developed park sites (including a community center) as well as maintain trails within the 1,200 acres of natural open space surrounding Dos Vientos Ranch. The 27.8 acre community park and community center, as well as the 5.1 acre neighborhood park were completed in 2003 and 1998 respectively. Sycamore Neighborhood Park opened in May 2006. The lighted Del Prado playfield was completed in January 2013.

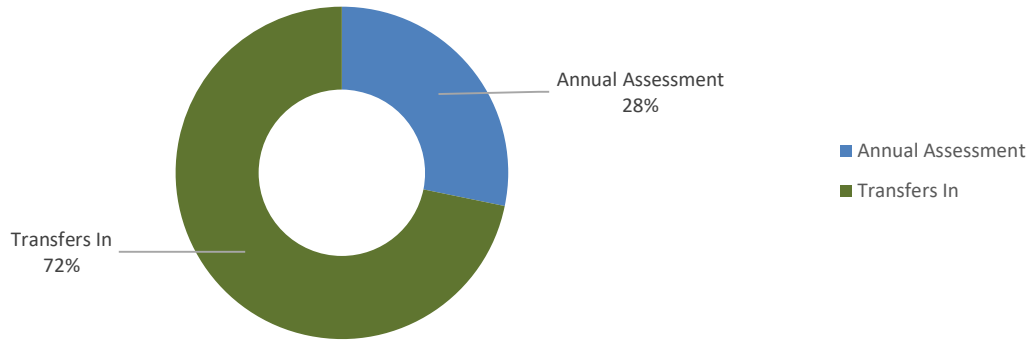
RANCHO CONEJO ASSESSMENT DISTRICT FUND



Conejo Recreation and Park District

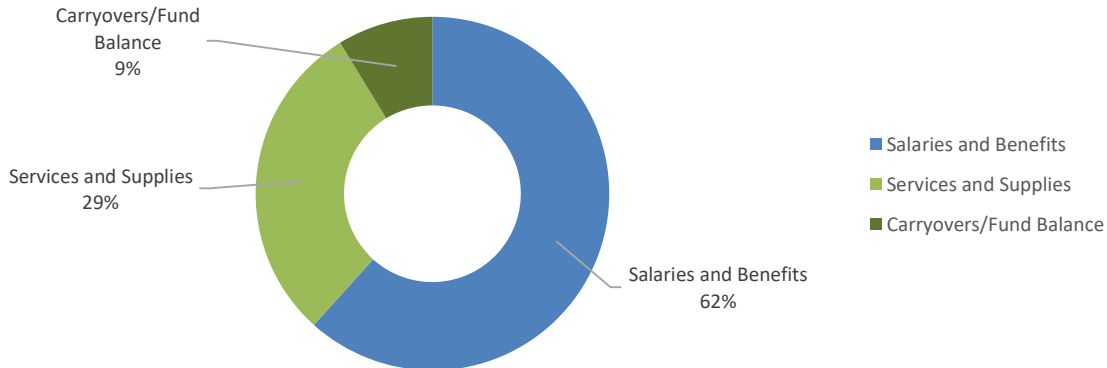
Rancho Conejo Fund Budget Summary

REVENUES



REVENUE	2026-27 Preliminary Budget
Annual Assessment	\$ 147,100
Interest Income	\$ -
Miscellaneous	\$ -
Transfers In	\$ 374,290
Carryovers/Fund Balance	
Total Revenue	\$ 521,390

EXPENDITURES



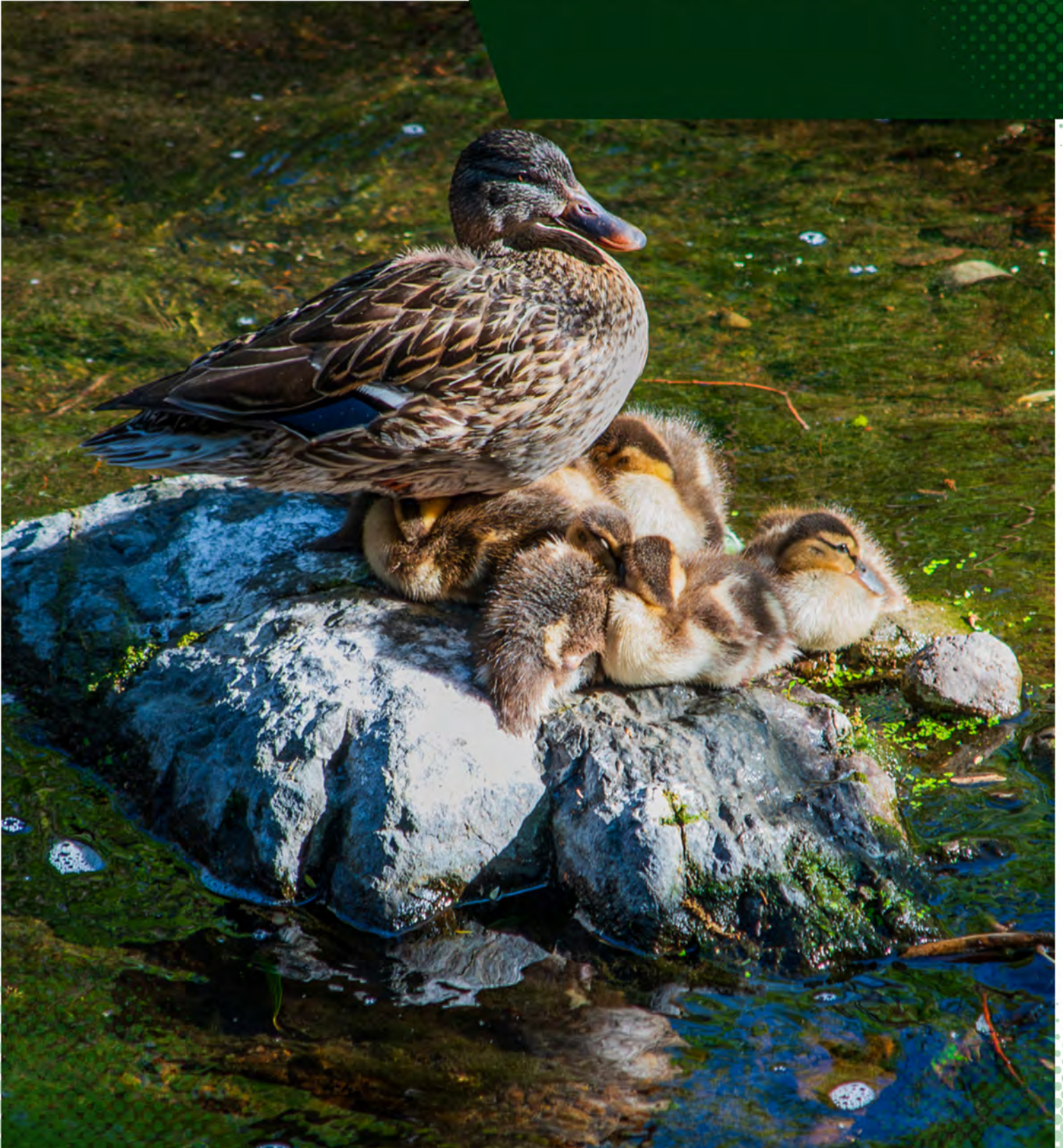
EXPENDITURES	2026-27 Preliminary Budget
Salaries and Benefits	\$ 321,590
Services and Supplies	\$ 154,300
Capital Improvements	\$ -
Carryovers/Fund Balance	\$ 45,500
Total Expenditures	\$ 521,390

Full Time Employees

1.88

Assessment District boundaries include properties within the Shapell/Rancho Conejo planned community. The Assessment District was created to improve and maintain the Rancho Conejo playfields and related park facility improvements which were completed over three phases between 1998 and 2001. Rancho Conejo Playfields include two softball fields with a soccer overlay, two tennis courts, a basketball court, a sand tot lot and play equipment, a sand volleyball court, restrooms, parking lot and open turf. Recent improvements include a parking lot expansion, access improvements, turf removal, and six lighted pickleball courts.

APPENDICES



CONEJO RECREATION & PARK DISTRICT

Park Acronyms

<u>Acronym</u>	<u>Full Park Name</u>	<u>Acronym</u>	<u>Full Park Name</u>
BAP	Banyan Park	LEO	Lake Eleanor Open Space
BDS	Borchard District Shop	LNP	Lang Ranch Neighborhood Park
BOC	Borchard Center	LOP	Lynn Oaks Park
BOP	Borchard Park	MCR	McCrea Ranch
BYP	Beyer Park	NGP	Newbury Gateway Park
CAN	Cañada Park	NPP	Newbury Park High School Pool
CBG	California Botanic Garden	NNP	North Ranch Neighborhood Park
CLU	CLU Community Pool	NRP	North Ranch Playfield
CCG	Community Garden	NOP	Northwood Park
CCC	Conejo Community Center	OMC	Old Meadows Center
CCP	Conejo Community Park	OMP	Old Meadows Park
CEQ	Conejo Creek Equestrian	ONP	Oakbrook Neighborhood Park
CCW	Conejo Creek Park West	ORP	Oakbrook Regional Park
CCN	Conejo Creek Park North	OSY	Oakbrook Service Yard
CCS	Conejo Creek Park South	OLP	Olsen Channel
CSW	Conejo Creek Park Southwest	PTP	Pepper Tree Playfield
COS	COSCA Open Space	RCP	Rancho Conejo Playfield
CRH	Crowley House	RPA	Rancho Potrero Public Access
CYP	Cypress Park	RAS	Russell Access Strips
DR	Deer Ridge Tank Road	RUP	Russell Park
DNP	Del Norte Park	STC	Sapwi Trails Community Park
DPP	Del Prado Playfield	SSH	Southshore Hills Park
DWS	Districtwide Services	SMP	Spring Meadow Park
CDP	Dog Park	SIM	Stagecoach Inn Museum
DVC	Dos Vientos Community Center	SIP	Stagecoach Inn Park
DCP	Dos Vientos Community Park	SUP	Suburbia Park
DVN	Dos Vientos Neighborhood Park	SHP	Sunset Hills Park
EPP	El Parque de la Paz	SNP	Sycamore Neighborhood Park
ESP	Estella Park	TOC	Thousand Oaks Community Center
EVP	Evenstar Park	TOP	Thousand Oaks Community Park
FRH	Farland House	THS	Thousand Oaks High School Pool
FIP	Fiore Playfield	TNC	Thousand Oaks Teen Center
GLP	Glenwood Park	TRP	Triunfo Park
GAC	Goebel Adult Community Center	WGE	Walnut Grove Equestrian Center
HIP	Hickory Park	WGP	Walnut Grove Park
HCC	Hillcrest Center	WAP	Waverly Park
HOP	Hope Nature Preserve	WEP	Wendy Park
KIP	Kimber Park	WFP	Wildflower Playfield
KNP	Knoll Park	WNP	Wildwood Neighborhood Park
KPA	Knoll Park Access Strip	WWP	Wildwood Park