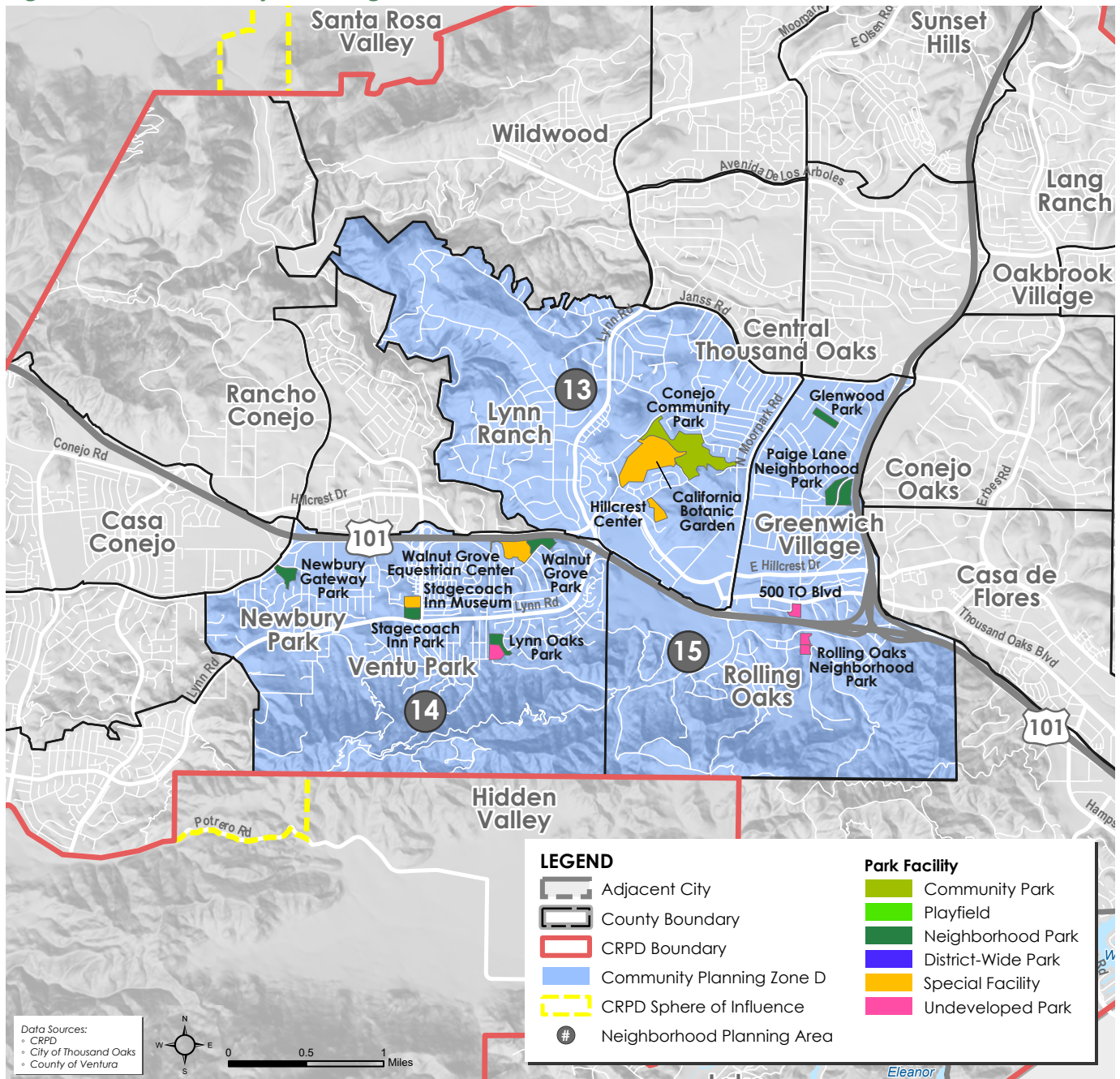


EXHIBIT B

Figure 9-D: Community Planning Zone D



Community Planning Zone D

Community Planning Zone D (Zone D) is located in the central southern portion of the CRPD area and includes the Lynn Ranch, Newbury Park, West Thousand Oaks Boulevard and Rolling Oaks neighborhoods of Thousand Oaks. The Zone is traversed by Highway 101, State Route 23, Lynn Rd, N Moorpark Rd, Hillcrest Rd, and Thousand Oaks Blvd. Zone D includes Neighborhood Planning Areas 13, 14, and 15.

Zone D Park Facilities include:

- Conejo Community Park
- Glenwood Park
- Paige Lane Neighborhood Park
- Rolling Oaks Neighborhood Park
- Lynn Oaks Park
- Newbury Gateway Park
- Stagecoach Inn Park
- Walnut Grove Park

Table 4-9: Community Planning Zone D Existing Facilities Inventory & Deficiency Analysis

COMMUNITY PLANNING ZONE D: EXISTING FACILITIES INVENTORY & DEFICIENCY ANALYSIS								
Neighborhood Planning Area	Park Facility	Existing 2020 Population	Park Standard (ac/1000 pop)	Need (acres)	Total Acres	Developed Acres	Deficient Acres*	
NEIGHBORHOOD PARKS								
13	Conejo Community Park	10,122	2.50	25.3	38.4	20.0	5.3	
14	Stagecoach Inn Park	9,906		24.8	4.9	4.9	5.8	
	Walnut Grove Park				6.5	6.5		
	Newbury Gateway Park				6.9	2.3		
	Lynn Oaks Park				10.3	5.3		
15	500 TO Blvd	10,381		26.0	0.75	0.0	6.70	
	Glenwood Park				5.2	5.2		
	Paige Lane Neighborhood Park				14.1	14.1		
	Rolling Oaks Neighborhood Park				5.5	0.0		
SUBTOTAL		30,409			76.1	92.55	58.3	17.8
PLAYFIELDS								
13	Conejo Community Park	30,409		1.25	38.0	38.4	20.0	18.0
SUBTOTAL					38.0	38.4	20.0	18.0
COMMUNITY PARKS								
13	Conejo Community Park	30,409	1.25	38.0	38.4	20.0	18.0	
SUBTOTAL				38.0	38.4	20.0	18.0	
TOTAL		30,409					53.8	

*Developed acres were used to calculate the acreage deficiency.

Neighborhood Parks Planning areas 13, 14, and 15 do not meet present acreage needs, and are deficient a total of 17.7 acres of neighborhood park space.

Planning Area 13 is deficient by 5.3 acres, Planning Area 14 is deficient by 5.8 acres, and Planning Area 15 is deficient by 6.7 acres of neighborhood park space.

Playfields The present playfield acreage is partially met- an additional 18.0 acres are needed.

Community Park The present community park acreage is partially met- an additional 18.0 acres are needed.

Table 4-10: Community Planning Zone D Additional Facilities Inventory

COMMUNITY PLANNING ZONE D: ADDITIONAL FACILITIES INVENTORY							
Neighborhood Planning Area	Park Facility	Total Acres	Developed Acres	NPA*	Park Facility	Total Acres	Developed Acres
SPECIAL FACILITIES (SF)				OPEN SPACE (OS)			
13	Conejo Valley Botanic Garden	39.6	39.6	13	Fireworks Hill Open Space	33.0	0.0
	Hillcrest Center for the Arts	8.8	4.0		Lynnmere Open Space	107.0	0.0
14	Stagecoach Inn Museum	5.0	5.0		Tarantula Hill Open Space	47.0	0.0
	Walnut Grove Equestrian Center	13.0	4.5	14	Hope Nature Preserve	348.0	0.0
TOTAL SF	66.4	53.1	Ventu Park Open Space		141.0	0.0	
					Walnut Open Space	9.0	0.0
				15	Los Padres Open Space	187.0	0.0
					Los Robles Open Space	357.0	0.0
				TOTAL OS		1229.0	0.0

*Neighborhood Planning Area (NPA)

Note: Refer to **Figure 4** for Open Space and Regional Park locations.